



CITY OF TURLOCK DEVELOPMENT SERVICES
PLANNING DIVISION
156 SOUTH BROADWAY, SUITE 120
TURLOCK, CA 95380-5456 (209)668-5640

Page 5 of 34

UNIFORM APPLICATION FORM

(PLEASE PRINT OR TYPE)

Project Information

PROJECT ADDRESS: 900 W. Monte Vista Ave
ASSESSOR'S PARCEL NUMBER: 071 - 006 - 021 AREA OF PROPERTY (ACRES OR SQUARE FEET): 9.73 ac
071 - 073 - 007/009
EXISTING ZONING: A RE RL RM RH CO CC CH CT I IBP PD _____ Downtown _____
GENERAL PLAN DESIGNATION: A VLDR LDR MDR HDR O Comm Comm Heavy Comm I
DESCRIBE THE PROJECT REQUEST: Monument Sign

Applicant Information

NOTE: Information provided on this application is considered public record and will be released upon request by any member of the public.

APPLICANT AMCAL Stanislaus LLC PHONE NO. 88-706-0694 E-MAIL: _____

Property Owner Info



Office Use Only

APPLICATION TYPE & NO.: MDP 17-09 DATE RECEIVED: 4/12/17
CASH _____ OR CHECK NO. _____ CHECKED BY: _____
PC HEARING DATE: _____ CC HEARING DATE: _____
PLANNER'S NOTES: _____

APPLICATION QUESTIONNAIRE

This document will assist the Planning Department in evaluating the proposed project and its potential environmental impacts. Complete and accurate information will facilitate the review of your project and minimize future requests for information. Please contact the Planning Division, 156 S. Broadway, Suite 120, Turlock, CA 95380 (209) 668-5640 if there are any questions about how to fill out this form.

PROJECT NAME: The Vista

APPLICANT'S STATEMENT OF INTENT (DESCRIBE THE PROPOSED PROJECT):

Permit & approvals to install monument sign as
shown in attached documents

Address: _____

Telephone: Business () _____ Home () _____

E-Mail Address: _____

PROJECT SITE INFORMATION:

Property Address or Location: 900 W. Monte Vista Ave.

Property Assessor's Parcel Number: 071-006-021; 071-073-007/009

Property Dimensions: _____

Property Area: Square Footage _____ Acreage 9.73

Site Land Use: Undeveloped/Vacant _____ Developed 9.73

If developed, give building(s) square footage 276,340

HAZARDOUS WASTE AND SUBSTANCE SITES LIST DISCLOSURE
PURSUANT TO
CALIFORNIA GOVERNMENT CODE SECTION 65962.5(f)

“(f) Before a lead agency accepts as complete an application for any development project which will be used by any person, the applicant shall consult the lists sent to the appropriate city or county and shall submit a signed statement to the local agency indicating whether the project and any alternatives are located on a site that is included on any of the lists compiled pursuant to this section and shall specify any list. If the site is included on a list, and the list is not specified on the statement, the lead agency shall notify the applicant pursuant to Section 65943...”

Note: You must contact Stanislaus County Environmental Resources at (209) 525-6700; AND either:

1) Contact the Department of Toxic Substances Control at (800) 728-6942; or 2) research the property on all of the following online databases:

EPA RCRA: <https://www3.epa.gov/enviro/facts/rcrainfo/search.html>

NEPAssist: <http://www.epa.gov/compliance/nepa/nepassist-mapping.html>

California DTSC Envirostor: www.envirostor.dtsc.ca.gov/public

California Geotracker: <http://geotracker.waterboards.ca.gov/>

to determine whether there are any known or potential hazards on the property.

I HEREBY CERTIFY THAT:

_____ THE PROJECT ***IS LOCATED*** ON A SITE WHICH IS INCLUDED ON ONE OR MORE OF THE LISTS COMPILED PURSUANT TO CALIFORNIA GOVERNMENT CODE SECTION 65962.5(f). THE SITE IS INCLUDED ON THE FOLLOWING LIST(S) SPECIFIED BELOW:

Regulatory ID Number: _____

Regulatory ID Number: _____

Regulatory ID Number: _____

OR

X THE PROJECT ***IS NOT LOCATED*** ON A SITE WHICH IS INCLUDED ON ONE OR MORE OF THE LISTS COMPILED PURSUANT TO CALIFORNIA GOVERNMENT CODE SECTION 65962.5(f).

I HEREBY CERTIFY THAT THE STATEMENT FURNISHED ABOVE PRESENTS THE INFORMATION REQUIRED BY CALIFORNIA GOVERNMENT CODE 65962.5(f) TO THE BEST OF MY ABILITY AND THAT THE STATEMENT AND INFORMATION PRESENTED IS TRUE AND CORRECT TO THE BEST OF MY KNOWLEDGE AND BELIEF.

PROPERTY OWNER/APPLICANT SIGNATURE:

I hereby certify that the facts, statements, and information presented within this application form are true and correct to the best of my knowledge and belief. I hereby understand and certify that any misrepresentation or omissions of any information required in this application form may result in my application being delayed or not approved by the City. I hereby certify that I have read and fully understand all the information required in this application form including:

1. the Hazardous Waste and Substance Sites List Disclosure Pursuant to California Government Code Section 65962.5(f) on page 22;
2. the Acknowledgments/Authorizations/Waivers starting on page 24; and
3. the Indemnification on page 26; and
4. the Department of Fish and Game CEQA Review Filing Fees on page 27.

Property Owner(s): (Attach additional sheets, as necessary)

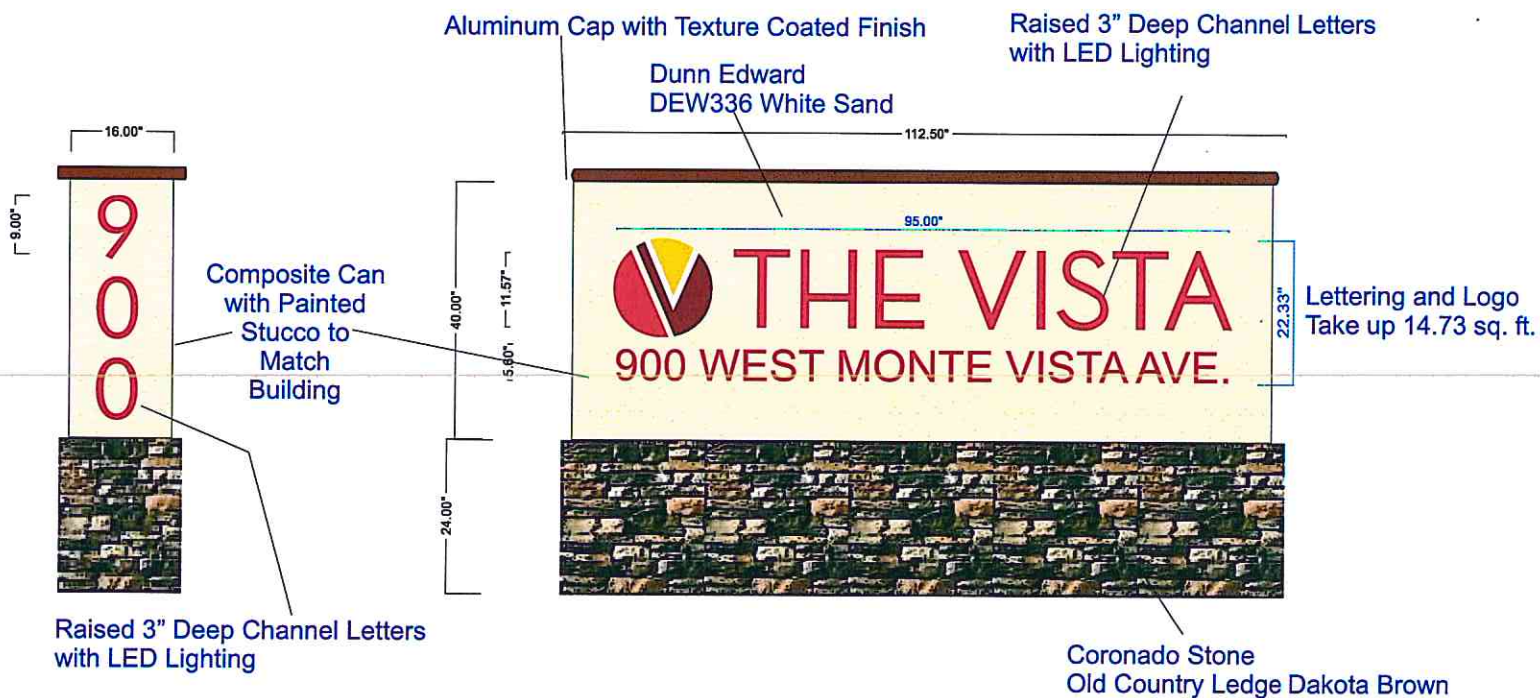
Applicant(s): (If different than above)

Signature of Applicant/Agent

Date

Print Name and Title of Applicant/Agent

Phone Number



Drawing No
Monument Specs.cdr
Page: 1 of 6

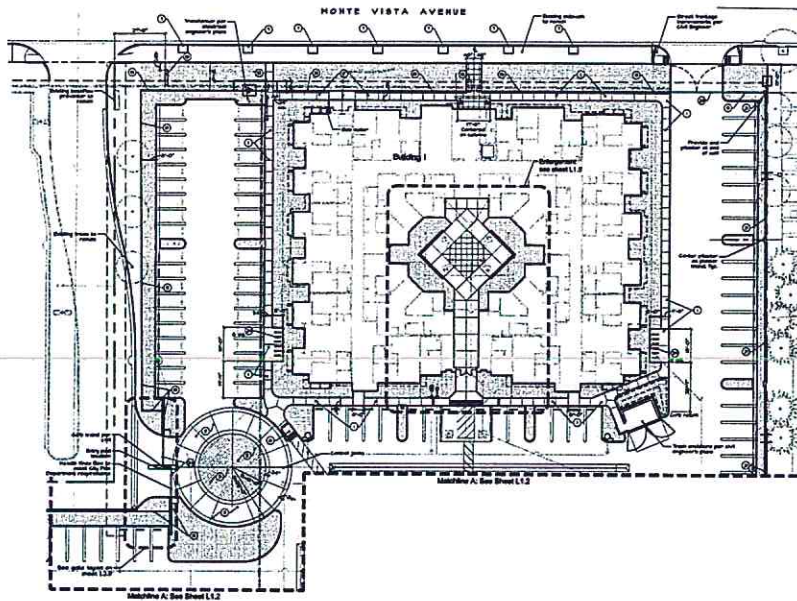
Project:
Location:
Date:
Client Approval:

Ver 2

All ideas, plans or arrangements indicated on this drawing are copyrighted and owned by Z Products, Inc. and shall not be reproduced, used by or disclosed to any persons, firm or corporation for any purpose whatsoever without written permission of Z Products, Inc.



14532 CALVERT STREET VAN NUYS, CA 91411
(818) 787-2774 Fax: (818) 787-2776
Email: Signs@zproductsinc.com



CONSTRUCTION CALLOUTS

1. See Sheet L.1.2 for Construction Notes
2. See Sheet L.1.2 for Construction Notes
3. See Sheet L.1.2 for Construction Notes
4. See Sheet L.1.2 for Construction Notes
5. See Sheet L.1.2 for Construction Notes
6. See Sheet L.1.2 for Construction Notes
7. See Sheet L.1.2 for Construction Notes
8. See Sheet L.1.2 for Construction Notes
9. See Sheet L.1.2 for Construction Notes
10. See Sheet L.1.2 for Construction Notes
11. See Sheet L.1.2 for Construction Notes
12. See Sheet L.1.2 for Construction Notes
13. See Sheet L.1.2 for Construction Notes
14. See Sheet L.1.2 for Construction Notes
15. See Sheet L.1.2 for Construction Notes
16. See Sheet L.1.2 for Construction Notes
17. See Sheet L.1.2 for Construction Notes
18. See Sheet L.1.2 for Construction Notes
19. See Sheet L.1.2 for Construction Notes
20. See Sheet L.1.2 for Construction Notes
21. See Sheet L.1.2 for Construction Notes
22. See Sheet L.1.2 for Construction Notes
23. See Sheet L.1.2 for Construction Notes
24. See Sheet L.1.2 for Construction Notes
25. See Sheet L.1.2 for Construction Notes
26. See Sheet L.1.2 for Construction Notes
27. See Sheet L.1.2 for Construction Notes
28. See Sheet L.1.2 for Construction Notes
29. See Sheet L.1.2 for Construction Notes
30. See Sheet L.1.2 for Construction Notes
31. See Sheet L.1.2 for Construction Notes
32. See Sheet L.1.2 for Construction Notes
33. See Sheet L.1.2 for Construction Notes
34. See Sheet L.1.2 for Construction Notes
35. See Sheet L.1.2 for Construction Notes
36. See Sheet L.1.2 for Construction Notes
37. See Sheet L.1.2 for Construction Notes
38. See Sheet L.1.2 for Construction Notes
39. See Sheet L.1.2 for Construction Notes
40. See Sheet L.1.2 for Construction Notes
41. See Sheet L.1.2 for Construction Notes
42. See Sheet L.1.2 for Construction Notes
43. See Sheet L.1.2 for Construction Notes
44. See Sheet L.1.2 for Construction Notes
45. See Sheet L.1.2 for Construction Notes
46. See Sheet L.1.2 for Construction Notes
47. See Sheet L.1.2 for Construction Notes
48. See Sheet L.1.2 for Construction Notes
49. See Sheet L.1.2 for Construction Notes
50. See Sheet L.1.2 for Construction Notes
51. See Sheet L.1.2 for Construction Notes
52. See Sheet L.1.2 for Construction Notes
53. See Sheet L.1.2 for Construction Notes
54. See Sheet L.1.2 for Construction Notes
55. See Sheet L.1.2 for Construction Notes
56. See Sheet L.1.2 for Construction Notes
57. See Sheet L.1.2 for Construction Notes
58. See Sheet L.1.2 for Construction Notes
59. See Sheet L.1.2 for Construction Notes
60. See Sheet L.1.2 for Construction Notes
61. See Sheet L.1.2 for Construction Notes
62. See Sheet L.1.2 for Construction Notes
63. See Sheet L.1.2 for Construction Notes
64. See Sheet L.1.2 for Construction Notes
65. See Sheet L.1.2 for Construction Notes
66. See Sheet L.1.2 for Construction Notes
67. See Sheet L.1.2 for Construction Notes
68. See Sheet L.1.2 for Construction Notes
69. See Sheet L.1.2 for Construction Notes
70. See Sheet L.1.2 for Construction Notes
71. See Sheet L.1.2 for Construction Notes
72. See Sheet L.1.2 for Construction Notes
73. See Sheet L.1.2 for Construction Notes
74. See Sheet L.1.2 for Construction Notes
75. See Sheet L.1.2 for Construction Notes
76. See Sheet L.1.2 for Construction Notes
77. See Sheet L.1.2 for Construction Notes
78. See Sheet L.1.2 for Construction Notes
79. See Sheet L.1.2 for Construction Notes
80. See Sheet L.1.2 for Construction Notes
81. See Sheet L.1.2 for Construction Notes
82. See Sheet L.1.2 for Construction Notes
83. See Sheet L.1.2 for Construction Notes
84. See Sheet L.1.2 for Construction Notes
85. See Sheet L.1.2 for Construction Notes
86. See Sheet L.1.2 for Construction Notes
87. See Sheet L.1.2 for Construction Notes
88. See Sheet L.1.2 for Construction Notes
89. See Sheet L.1.2 for Construction Notes
90. See Sheet L.1.2 for Construction Notes
91. See Sheet L.1.2 for Construction Notes
92. See Sheet L.1.2 for Construction Notes
93. See Sheet L.1.2 for Construction Notes
94. See Sheet L.1.2 for Construction Notes
95. See Sheet L.1.2 for Construction Notes
96. See Sheet L.1.2 for Construction Notes
97. See Sheet L.1.2 for Construction Notes
98. See Sheet L.1.2 for Construction Notes
99. See Sheet L.1.2 for Construction Notes
100. See Sheet L.1.2 for Construction Notes

See Sheet L.1.2 for Construction Notes



1111 N. Maple St.
Turlock, CA 95354
(209) 223-2888
(209) 223-4811

THE VISTA
TURLOCK, CA
ANALYSIS, L.L.C.
3011 ADOBE ROAD, STE 100, ADIRON, CA 95011

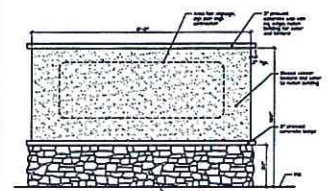
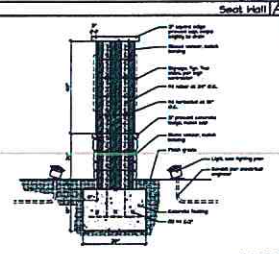
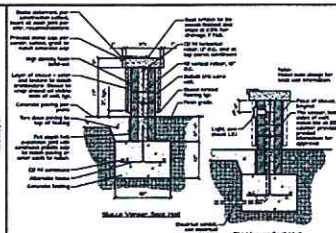
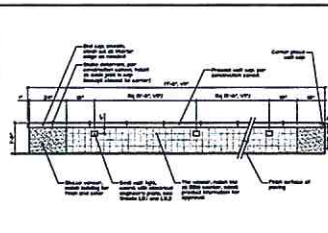


HUMPHREYS & PARTNERS
ARCHITECTS, L.P.
2001 W. BENTLEY BLVD. STE 100
TURLOCK, CA 95354
(209) 223-2888
(209) 223-4811



Construction Plan - Area 'A'

SHEET NO.
L.1.1
KLA 15-1747



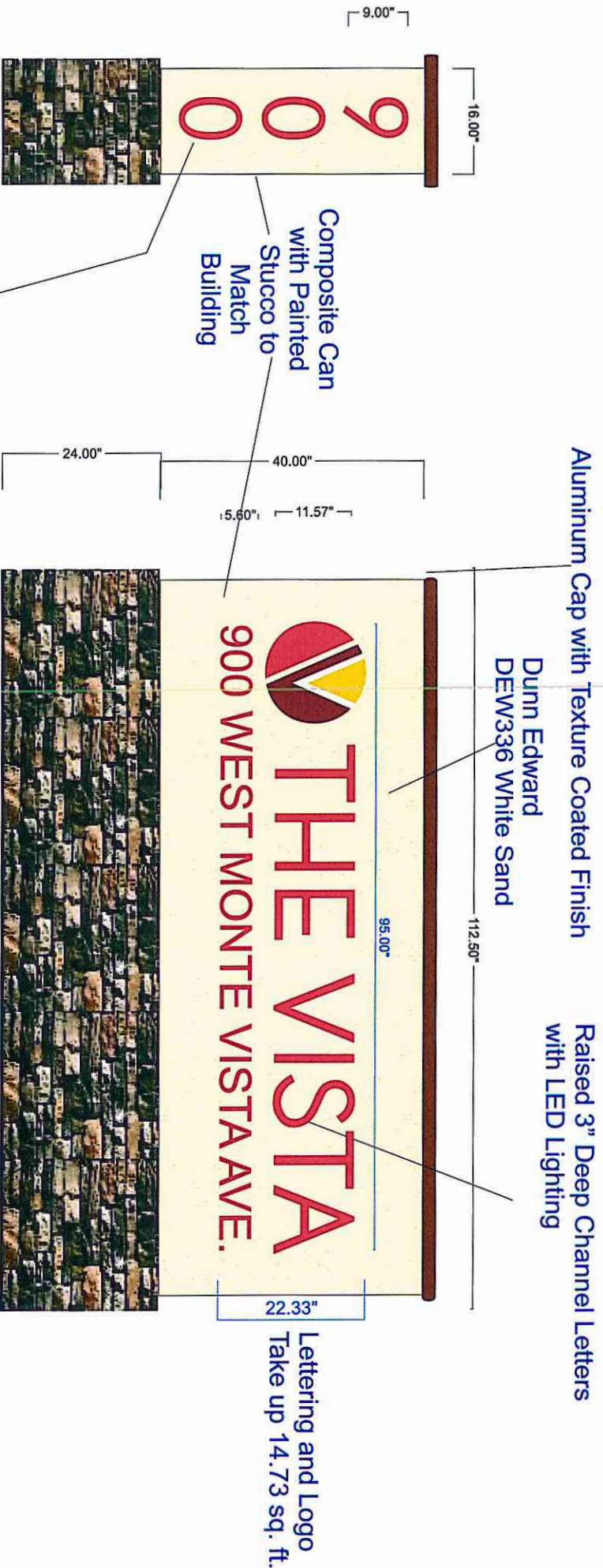
KLA
LANDSCAPE
ARCHITECTURE
PLANNING
www.klausa.com


Designed by	EGH	
Drawn by	MBH	
Assembled by		
Run by	12/21/85	
Project Name: Boring		
Date of Project Completion		
Project Description		
Remarks		
#	Drill	Remarks

THE VISTA
TURLOCK, CA
AMCAL STANISLAUS, LLC
30141 AGOURA ROAD, STE 100, AGOURA

HUMPHREYS & PARTNERS
ARCHITECTS, L.P.
2300 DE WISSTEL SUITE 110 NEWPORT BEACH CA 92660
(949) 551-1400 • (949) 551-1017 / fax
DALLAS NEWPORT BEACH NEW ORLEANS
CHICAGO SAN FRANCISCO SCOTTSDALE

L2.4
RA 15-1747



Drawing No		Project		Ver 2		All ideas, plans or arrangements incorporated and approved by Z Products, Inc. and shall not be reproduced, used for any purpose whatsoever, for any purpose whatsoever without the written consent of Z Products, Inc.	
Monument Specs.cdr		Location:		Date:		14532 CALVERT STREET VAN NUYS, CA 91411 (818) 787-2774 Fax: (818) 787-2776 Email: Signs@zproductsin.com	
Page: 1 of 6		Client Approval:		Status Rep: SM			
		Drawn by:		Date of Approval:			

