

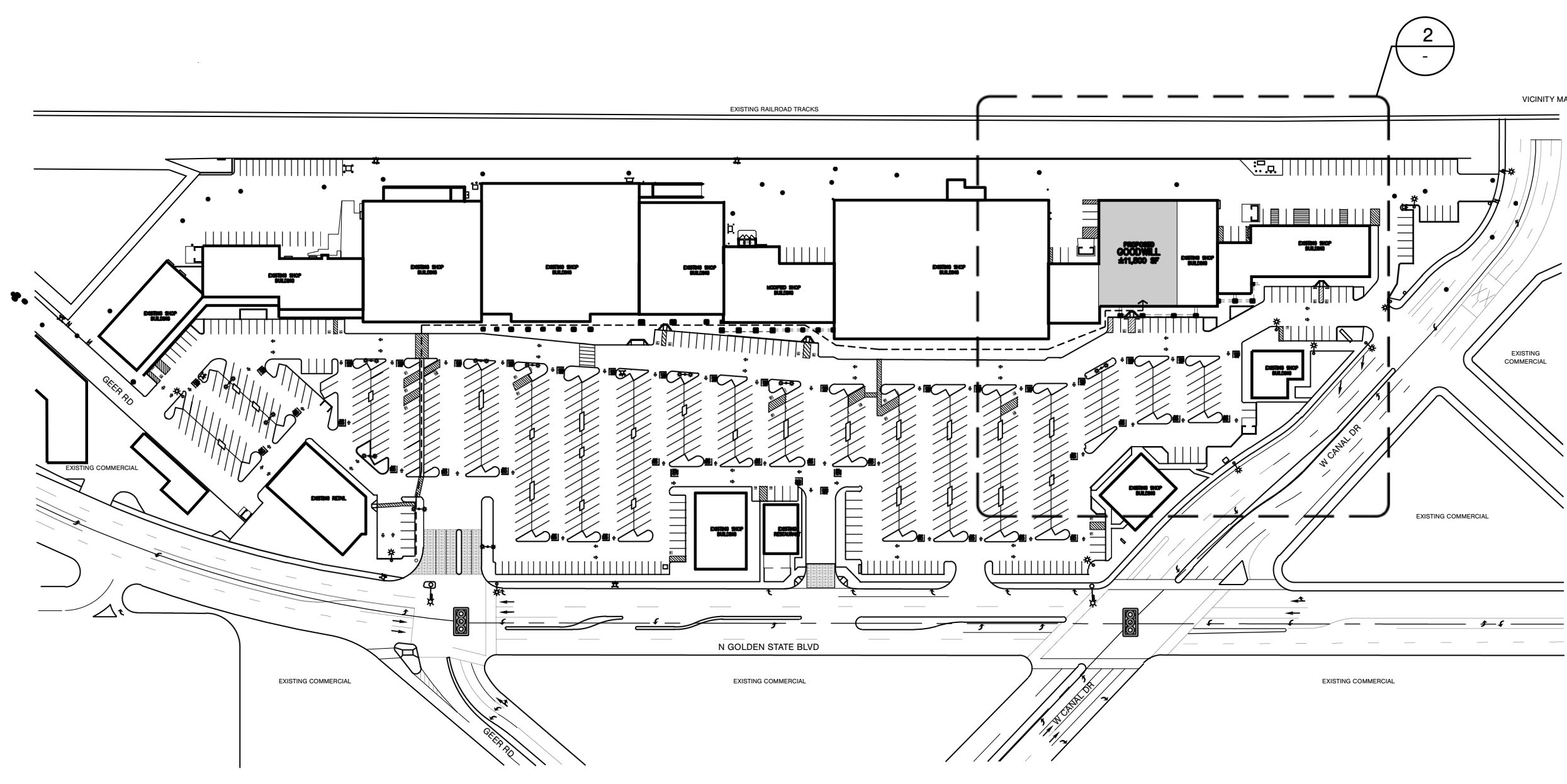
- 01 (E) ACCESSIBLE PATH OF TRAVEL.
- 02 (E) CONCRETE CURB AND SIDEWALK.
- 03 (E) CITY SIDEWALK.
- 04 (E) CITY CURB AND GUTTER.
- 05 (E) PARKING LOT LIGHT POLE.
- 06 (E) PEDESTRIAN PATH OF TRAVEL FROM TENANT UNIT TO PUBLIC SIDEWALK. SEE OVERALL SITE PLAN ON THIS SHEET FOR CONTINUATION.
- 07 (E) MONUMENT SIGN.
- 08 (E) +24" HIGH PLANTER SITE WALL.
- 09 (E) PARKING LOT LANDSCAPE PLANTER ISLAND.
- 10 (E) TRASH ENCLOSURE.
- 11 (E) PARKING TO REMAIN
- 12 (E) ASPHALT PAVING
- 13 HANDICAPPED CURB ACCESS RAMP WITH MAXIMUM 8.33% SLOPE - PART OF SITE CONTRACT (REFER TO DETAIL 17/GA-501)
- 14 HANDICAPPED PARKING STALLS - ONE ACCESSIBLE SPACE SHALL BE VAN ACCESSIBLE - THE 96 INCH MINIMUM ACCESS AISLE SHALL BE PLACED ON THE SIDE OPPOSITE THE DRIVER'S SIDE (REFER TO CBC SECTION 11B-502). REFER TO DETAIL 19/GA-501)
- 15 PAINT HANDICAP PARKING SYMBOL (REFER TO DETAIL 18/GA-501)
- 16 HANDICAP PARKING SIGN SET IN CONCRETE FILLED STEEL PIPE BOLLARD (REFER TO DETAIL 20/GA-501)

SITE PLAN (FOR REFERENCE ONLY)

SCALE	2
1" = 40'	

SITE PLAN KEY NOTES

SCALE	D
N/A	



OVERALL SITE PLAN - FOR REFERENCE ONLY

SCALE	1
NTS	

CONSTRUCTION NOTES

SCALE	A
N/A	

ADAA PATH OF TRAVEL

LEGEND	SCALE	C
	N/A	

1. WASTE STORAGE AREAS SHALL BE SITUATED SO THAT:
 - a. THEY DO NOT INTERFERE WITH THE TRAFFIC PATTERNS OF INDIVIDUALS OR VEHICLES.
 - b. THEY ARE READILY ACCESSIBLE TO COLLECTION PERSONAL AT ALL TIMES.
2. THE WASTE STORAGE AREA SHALL BE GRADED SO THAT STORAGE CONTAINERS REMAIN AT REST WITHOUT AUXILIARY RESTRAINING DEVICES.

WASTE STORAGE NOTES	SCALE	B
	N/A	

1. ALL DIMENSIONS SHOWN ON THE SITE PLAN ARE MINIMUM DIMENSIONS ONLY.
2. CONTRACTOR SHALL BUILD FROM DIMENSIONS ON THE HORIZONTAL CONTROL PLAN PREPARED BY THE CIVIL ENGINEER.
3. FOR ANY DISCREPANCIES NOTIFY THE ARCHITECT IMMEDIATELY.



mgc architecture
 949.553.1117 F 949.474.7056
 111 Pacifica, Suite 280, Irvine, CA 92618



A Project for:

TURLOCK TOWN CENTER
 749 N. GOLDEN STATE BLVD.
 TURLOCK, CA 95380

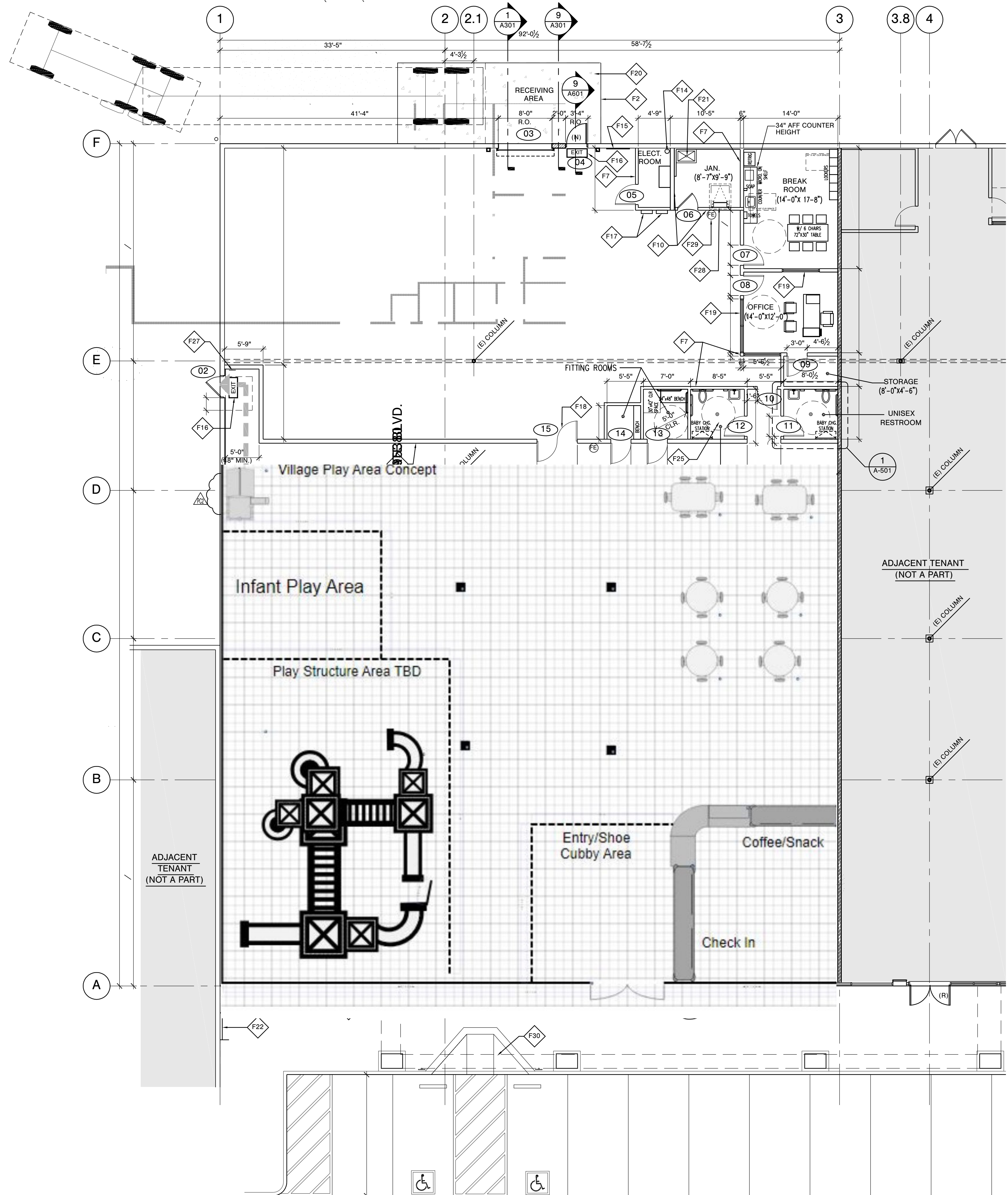


Client:
MERIDIAN PACIFIC, LTD.
 1801 TIBURON BLVD., SUITE 800
 TIBURON, CA 94920 Phone
 415.789.5530

Revisions:	
PC1 CORRECTIONS	09-06-18

No.	Description	Date
Project No.:		18.116.40
Drawn By:		
Reviewed By:		
Scale:		AS NOTED

**Play Laugh
 Always Young
 Site Plan**



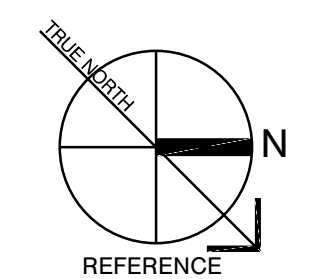
- ◆ F1 LINE OF EXISTING CANOPY ABOVE - PROTECT IN PLACE
- ◆ F2 DASHED LINE INDICATES NEW METAL CANOPY ABOVE DONATION RECEIVING AREA. REFER TO SHEETS A301, A302 AND STRUCTURAL DRAWINGS
- ◆ F3 RELOCATED DOUBLE DOORS
- ◆ F4 NEW (2) DATA 1" DIA. CONDUITS
- ◆ F5 EXISTING RECESSED HOSE BIBB TO REMAIN - PROTECT IN PLACE
- ◆ F6 PROTECT EXISTING RECY. BD. ON STUDS @ O.C. TO BOTTOM OF (RE: STRUCTURAL PLANS FOR ADDITIONAL INFORMATION)
- ◆ F7 PROTECT EXISTING RECY. BD. ON STUDS @ O.C. TO BOTTOM OF (RE: STRUCTURAL PLANS FOR ADDITIONAL INFORMATION)
- ◆ F8 PATH OF TRAVEL DISTANCE TO SECOND REQUIRED EXIT
- ◆ F9 PROVIDE 6" DEMISING WALL (RE: STRUCTURAL PLANS FOR ADDITIONAL INFORMATION)
- ◆ F10 PORTION OF EXISTING STUD WALL TO REMAIN - PROTECT IN PLACE
- ◆ F11 MODIFY PORTION OF EXISTING ALUMINUM STOREFRONT (RE: EXTERIOR ELEVATIONS FOR ADDITIONAL INFORMATION)
- ◆ F12 EXISTING ROOF DRAINS TO REMAIN - PROTECT IN PLACE
- ◆ F13 PROVIDE 6" BASE MOLDING
- ◆ F14 EXISTING FIRE RISER TO REMAIN - PROTECT IN PLACE
- ◆ F15 EXISTING TELEPHONE BOARD TO REMAIN - PROTECT IN PLACE (RE: ELECTRICAL PLANS FOR ADDITIONAL INFORMATION)
- ◆ F16 ILLUMINATED EXIT SIGN WITH BATTERY BACK-UP (RE: ELECTRICAL PLANS)
- ◆ F17 PROVIDE NEW ELECTRICAL PANELS (RE: ELECTRICAL PLANS FOR ADDITIONAL INFORMATION)
- ◆ F18 PROVIDE NEW DOUBLE IMPACT DOORS
- ◆ F19 PROVIDE NEW WINDOW WITH ONE-WAY VISION GLAZING
- ◆ F20 PROVIDE NEW 5" CONCRETE PAD LOADING AREA - BURNISHED AND SEALED (RE: STRUCTURAL PLANS FOR ADDITIONAL INFORMATION)
- ◆ F21 PROVIDE NEW MOP SINK (RE: PLUMBING PLANS FOR ADDITIONAL INFORMATION)
- ◆ F22 EXISTING BIKE RACK TO REMAIN - PROTECT IN PLACE
- ◆ F23 EXISTING WALL FURRING TO REMAIN - PROTECT IN PLACE
- ◆ F24 EXISTING STOREFRONT TO REMAIN - PROTECT IN PLACE
- ◆ F25 G.O. TO CONSTRUCT COMPLETE TWO ACCESSIBLE SINGLE-USE ACCOMMODATION RESTROOMS INCLUDING BUT NOT LIMITED TO, ROOMS FINISHES, PLUMBING FIXTURES, ACCESSORIES, ELECTRICAL, MECHANICAL, PLUMBING, ETC. REFER TO DETAIL DRAWINGS FOR COMPLETE INFORMATION. FLOOR SHALL BE SLOPED TO DRAIN FOR 1/8" PER FT. MAX. AND 1/4" PER FT. MIN. ALL UNDERGROUND PLUMBING SHALL BE COORDINATED AND PROVIDED AS REQUIRED.
- ◆ F26 SMOOTH AND LEVEL EXISTING CONCRETE SLAB, FLOOR MUST BE LEVEL TO 1/8" OVER 10'-0" SPANS. FLOOR MUST BE READY TO ACCEPT NEW TENANT FINISHES. ALL HOLES AND CRACKS TO BE FILLED WITH APPROVED MATERIAL PROVIDED BY CERTIFIED CONTRACTOR.
- ◆ F27 PROVIDE ACCESSIBLE EXIT DOOR SIGNAGE, TACTILE EXIT SIGN AND AT BUILDING ENTRANCE THAT IS ACCESSIBLE TO AND USABLE BY PERSONS WITH DISABILITIES PROVIDE ACCESSIBLE SIGNAGE - SIGN TO DISPLAY THE INTERNATIONAL SYMBOL OF ACCESSIBILITY TO BE VISIBLE TO PERSONS ALONG APPROACHING PEDESTRIAN WAYS. TYPICAL TO ALL EXIT DOORS
- ◆ F28 NEW ROOF ACCESS HATCH AND METAL LADDER WITH CAGE.
- ◆ F29 PROVIDE AND INSTALL TYPE 2-A10:BC RATING FIRE EXTINGUISHER, WALL MOUNTED OR IN CABINET AT 4 FT ABOVE FLOOR LEVEL.
- ◆ F30 (N) ACCESSIBLE CURB RAMP. SEE DETAIL GA 502

FLOOR PLAN KEY NOTES SCALE NA C

1. DOOR HARDWARE SHALL BE OF THE LEVER OR PUSH TYPE AND BE OPERABLE WITH A MAX EFFORT OF 8.5 LBS FOR EXTERIOR DOORS AND 5 LBS FOR INTERIOR DOORS.
2. DOOR HARDWARE SHALL COMPLY WITH CBC SECTION 1003.1, 8, 9, AND 10.
3. AN EXTERIOR LEVEL LANDING MAY SLOPE UP TO 1/4 INCH PER FOOT IN ANY DIRECTION FOR SURFACE ACE DRAINAGE. CBC SECTION 1133B.2.4.

NOTES SCALE NA B

- NON-RATED STUD WALL OR PARTITION (REFER TO STRUCTURAL DRAWINGS) (REFER TO INSULATION NOTE ABOVE)
- 1 HOUR WALL (REFER TO STRUCTURAL DRAWINGS)
- 2 HOUR WALL (REFER TO STRUCTURAL DRAWINGS)
- CMU WALL (REFER TO CIVIL AND STRUCTURAL DRAWINGS)
- ILLUMINATED EXIT SIGN
- FIRE SPRINKLER RISER
- PROPOSED TYPE 2-A10:BC FIRE EXTINGUISHER LOCATIONS
- WALL SCOSCE
- WALL PAC (WALL MOUNTED AREA LIGHT)
- CMU WALL (REFER TO CIVIL AND STRUCTURAL DRAWINGS)



FLOOR PLAN SCALE 1/8" = 1'-0" 1

LEGEND SCALE NTS A



mgs architecture
 949.553.1117 949.474.7056
 111 Pacifica, Suite 280, Irvine, CA 92618



Seal: A Project for:

TURLOCK TOWN CENTER



Client: **MERIDIAN PACIFIC, LTD.**
 1801 TIBURON BLVD., SUITE 800
 TIBURON, CA 94920 Phone 415.789.5530

Revisions:	Date	Project No.:
PC1 CORRECTIONS	09-06-18	18.116.40
PC2 CORRECTIONS	10-11-18	

No.	Description	Date	Project No.:
07-03-18	Filename: --		18.116.40

Drawn By: --Reviewed By: --Scale: AS NOTED Date: 07-03-18 Filename: --

Sheet Title: **Play Laugh Always Young Floor Plan**

Sheet #: **A-101**



m c g architecture

948.553.1117 948.474.7056
111 Pacifica, Suite 280, Irvine, CA 92618

Seal:



A Project for:

TURLOCK TOWN CENTER
749 N. GOLDEN STATE BLVD.
TURLOCK, CA 95380



Client:

MERIDIAN PACIFIC, LTD.
1801 TIBURON BLVD., SUITE 800
TIBURON, CA 94920
Phone 415.789.5530

Revisions:

PC1	PC1 CORRECTIONS	09-04-18
-----	-----------------	----------

- A. GC TO CONFIRM TOTAL AMOUNT OF DEMOLITION AFTER A THOROUGH REVIEW OF ALL PLANS AND VISITING THE PROJECT SITE TO PERFORM A VISUAL OBSERVATION OF EXISTING CONDITIONS.
- B. GC TO COORDINATE THEIR WORK WITH EXISTING TENANTS TO INSURE TENANTS BUSINESS AND CUSTOMERS ARE NOT DISRUPTED BY NEW WORKS.
- C. GC TO CONFIRM ANY EXISTING EQUIPMENT/FIXTURES WHICH ARE THE PROPERTY OF THE TENANT AND TAKE APPROPRIATE CARE TO PROTECT THEM IN PLACE.
- D. GC TO CONFIRM THAT SUBSTRATE IS ADEQUATE FOR NEW FINISHES AND ESTABLISH THE MEANS AND METHODS FOR WATERPROOFING ON/AROUND EXISTING AND NEW FINISHES.

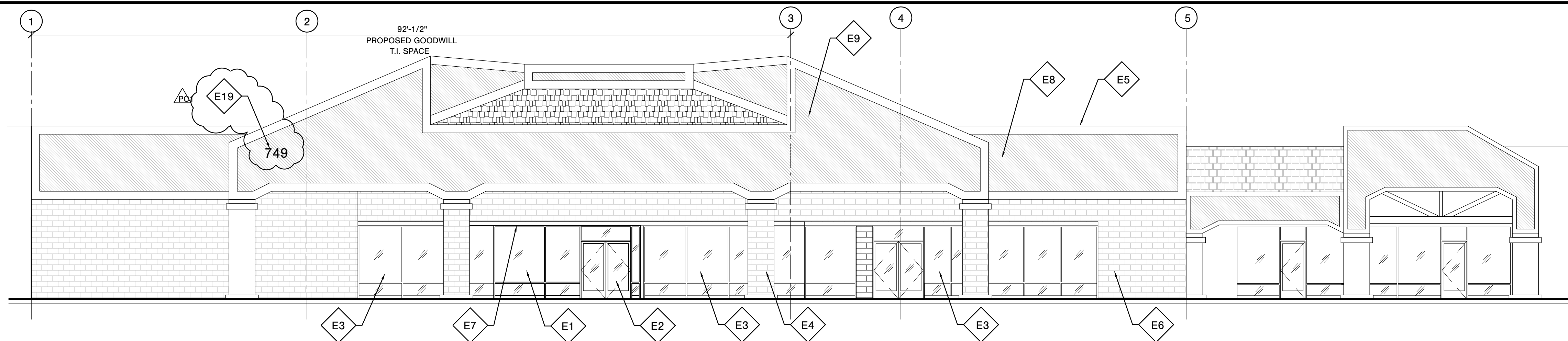
No.	Description	Date
Project No.:		18.116.40
Drawn By:		
Reviewed By:		
Scale:		AS NOTED
Date:		07-03-18
Filename:		
Sheet Title:		

Play Laugh
Always Young
Exterior Elevations

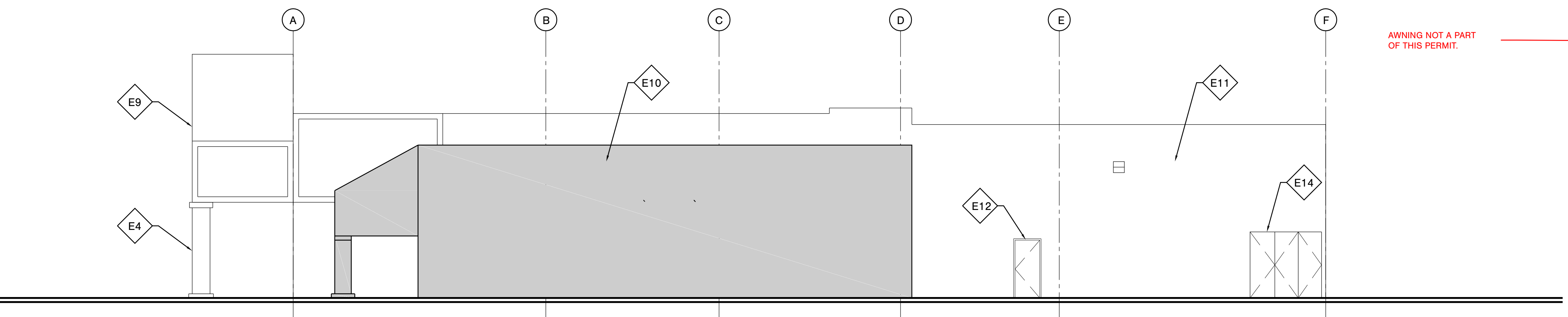
Sheet #:

A-201 © MCG ARCHITECTS 2018 ALL

RIGHTS RESERVED

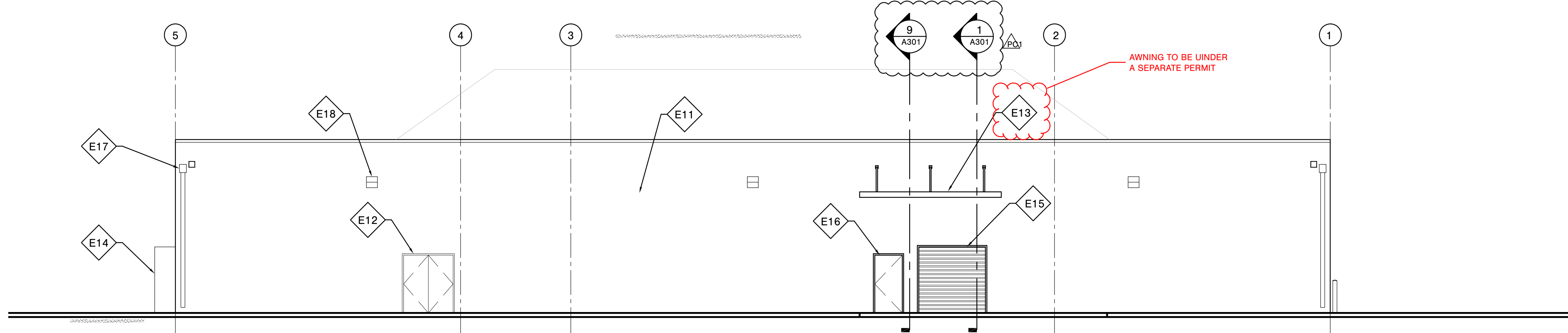


NORTH ELEVATION SCALE 1/4"=1'-0" 4

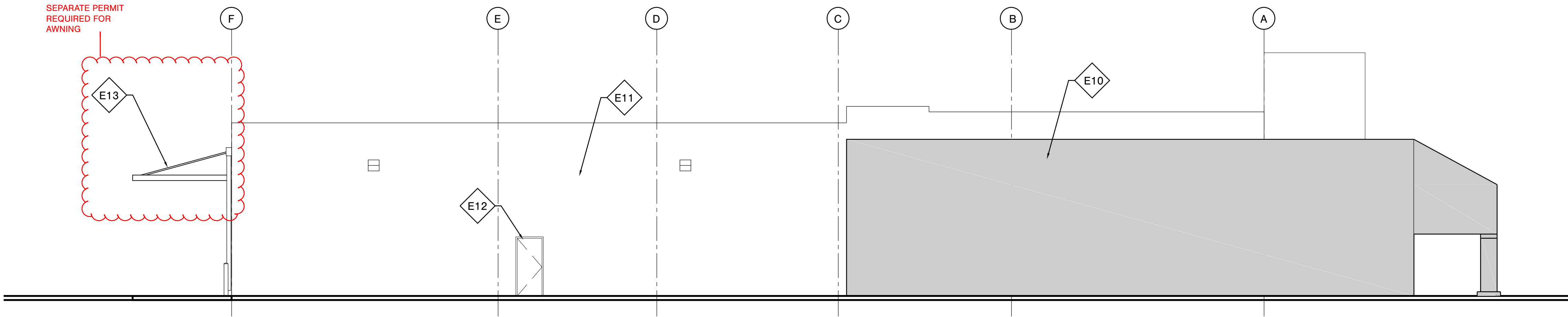


WEST ELEVATION SCALE 1/4"=1'-0" 3

ELEVATION KEYNOTES SCALE NONE C



SOUTH ELEVATION SCALE 1/4"=1'-0" 2



EAST ELEVATION SCALE 1/4"=1'-0" 1

GENERAL NOTES SCALE NONE A