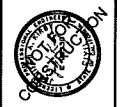


LEGEND

	PROPERTY LINE
	CENTER LINE
	EASEMENT LINE
	APPROXIMATE CIVIL LIMIT OF WORK LINE
	ACCESSIBLE PATH OF TRAVEL (FOR REFERENCE ONLY, DO NOT PAINT)
	PAVEMENT SAWCUT AND JOIN LINE
	CONCRETE SIDEWALK
	HEAVY DUTY CONCRETE PAVEMENT
	ASPHALT CONCRETE
	LANDSCAPE AREA
	EXISTING VACANT LAND

Chick-fil-A
 2200 N. Highway 54
 Atlanta, Georgia
 30328-2214

Kimley-Horn
 4837 CHABOT DRIVE, SUITE 300, PLEASANTON, CA 94588
 PHONE: (925) 309-3000 FAX: (925) 309-0044
 WWW.KIMLEY-HORN.COM

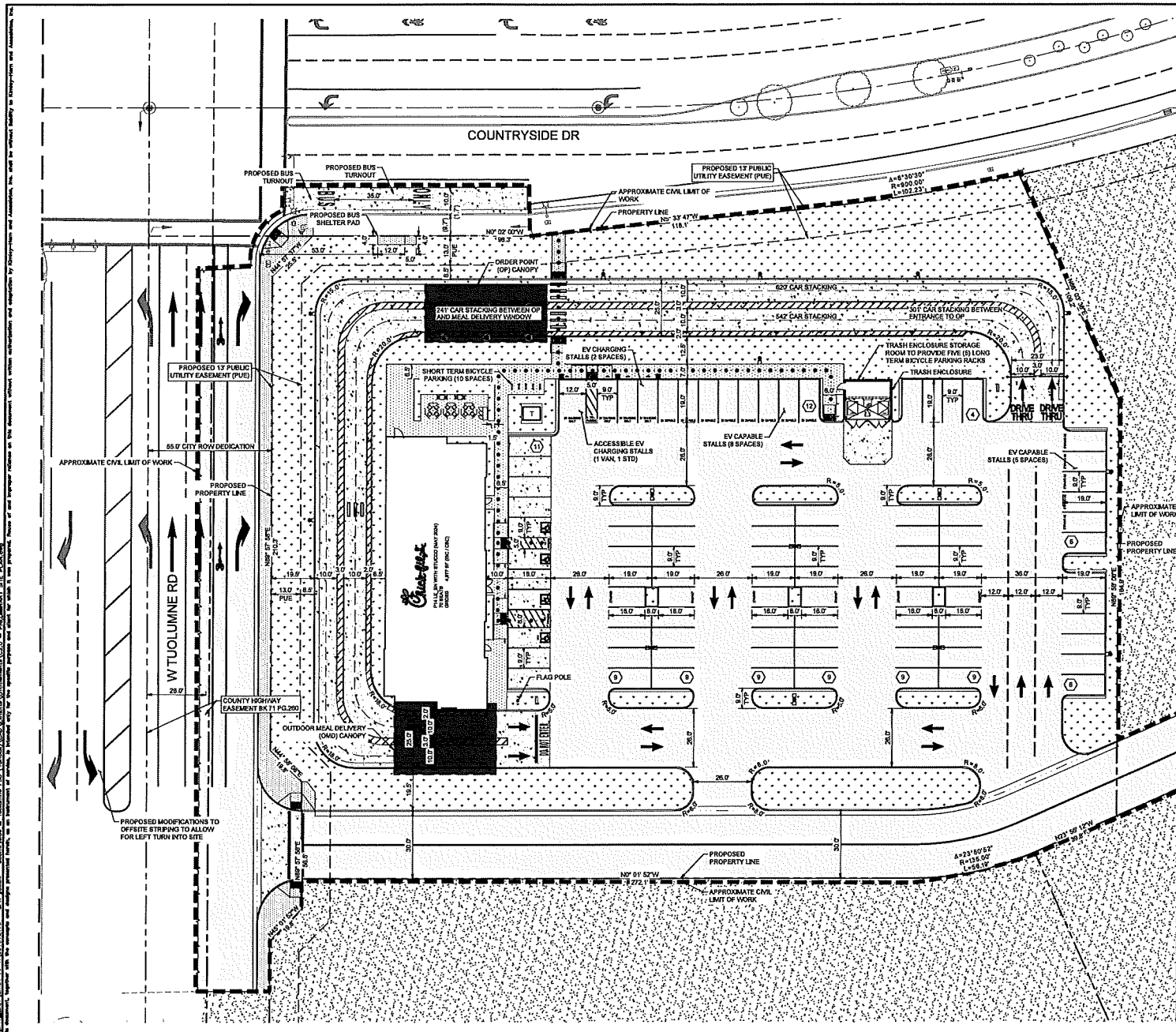


NO.	REVISIONS	DATE	BY	CHK

CHICK-FIL-A
 COUNTRYSIDE DR &
 W TUOLUMNE RD
 TURLOCK, CA 95380

OVERALL
 PRELIMINARY
 SITE PLAN

SHEET NUMBER
C2.0



LEGEND

- PROPERTY LINE
- - - CENTER LINE
- - - EASEMENT LINE
- - - APPROXIMATE CIVIL LIMIT OF WORK LINE
- ACCESSIBLE PATH OF TRAVEL (FOR REFERENCE ONLY, DO NOT PAINT)
- PAVEMENT SAWCUT AND JOINT LINE
- ▨ CONCRETE SIDEWALK
- ▩ HEAVY DUTY CONCRETE PAVEMENT
- ▧ ASPHALT CONCRETE
- ▤ LANDSCAPE AREA
- ▦ EXISTING VACANT LAND
- ⊙ ROW PARKING COUNT

- NOTES**
- ALL PARKING LOT CURB RADII ARE 3' OR 10' UNLESS OTHERWISE NOTED.
 - ALL AUTOMOBILE PARKING SPACES ARE 9' WIDE X 19' LONG AND VAN ACCESSIBLE SPACES ARE 12' WIDE X 19' LONG, UNLESS SHOWN OTHERWISE.
 - REFER TO ARCHITECTURAL PLANS FOR DIMENSIONS OF BUILDINGS.
 - SITE LIGHTING IS SHOWN FOR REFERENCE. SEE ELECTRICAL PLANS FOR DETAILS AND LOCATIONS.

PARKING REQUIRED SUMMARY TABLE

BUILDING AREA (SF)	4,977
BUILDING SEATS	70
OUTDOOR SEATS	18
REQUIRED PARKING STALLS	50
PROVIDED PARKING STALLS	93

NOTE (1) PARKING SPACES PER THREE (3) SEATS OR ONE (1) PARKING SPACE PER 100 SQUARE FEET OF GROSS FLOOR AREA PER CITY OF TURLOCK MUNICIPAL CODE TITLE 9, CHAPTER 9-2-206.

OVERALL PARKING SUMMARY TABLE

STALL TYPE	REQUIRED / ALLOWED	PROVIDED
STANDARD PARKING STALL (9'X19')	-	66
COMPACT PARKING STALL (8'X18')	27	6
EV CAPABLE (SEE TABLE BELOW)	17	17
ADA PARKING	4 (1 VAN, 3 STD)	4 (1 VAN, 3 STD)
TOTAL	-	93

REQUIRED NUMBER OF ADA PARKING SPACES IS CALCULATED PER 2022 CBC AND IS BASED ON THE PROVIDED NUMBER OF TOTAL PARKING SPACES (93 SPACES).
 **REQUIRED NUMBER OF COMPACT PARKING STALLS IS CALCULATED PER CITY OF TURLOCK MUNICIPAL CODE TITLE 9, CHAPTER 9-2-210(B)(1) WHICH STATES A MAXIMUM OF THIRTY (30%) PERCENT OF THE TOTAL PARKING SPACES MAY BE CONSTRUCTED AS COMPACT SPACES.

EV & BICYCLE PARKING REQUIREMENTS

STALL TYPE	REQUIRED	PROVIDED
EV CAPABLE	17	17
EVSE	4 (1 VAN ACCESSIBLE)	4 (1 VAN, 1 STD ACCESSIBLE)
SHORT TERM BIKE PARKING	10	10
LONG TERM BIKE PARKING	5	5

REQUIRED NUMBER OF EV CAPABLE STALLS AND EVSE WITH EVSE STALLS ARE CALCULATED PER THE 2022 CALIFORNIA BUILDING CODE AND ARE BASED ON THE TOTAL PROVIDED PARKING SPACES (93 SPACES).

REQUIRED NUMBER OF SHORT TERM BIKE PARKING SPACES SHALL BE A MINIMUM OF TEN (10%) PERCENT OF THE NUMBER OF AUTOMOBILE PARKING SPACES PER CITY OF TURLOCK MUNICIPAL CODE TITLE 9, CHAPTER 9-2-210(A)(1).

REQUIRED NUMBER OF LONG TERM BIKE PARKING SPACES SHALL BE FIVE (5%) PERCENT OF ADDITIONAL MOTORIST SPACES AFTER THE FIRST TEN (10) PER CENT OF TURLOCK MUNICIPAL CODE TITLE 9, CHAPTER 9-2-210(A)(1).

Chick-fil-A
 2150 Bluffington Road
 Atlanta, Georgia 30341-2818

Kimley-Horn
 4437 CHAMBERLAIN DRIVE, SUITE 300, ALPHESSION, CA 94804
 PHONE: 925.263.4400 FAX: 925.263.4449
 WWW.KIMLEY-HORN.COM

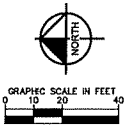


NO.	REVISIONS	DATE	BY

CHICK-FIL-A
 COUNTRYSIDE DR &
 W TUOLUMNE RD
 TURLOCK, CA 95380

PRELIMINARY
 SITE PLAN

SHEET NUMBER
 C2.1





Chick-fil-A
5200 Buffington Road
Atlanta, Georgia
30349-2998

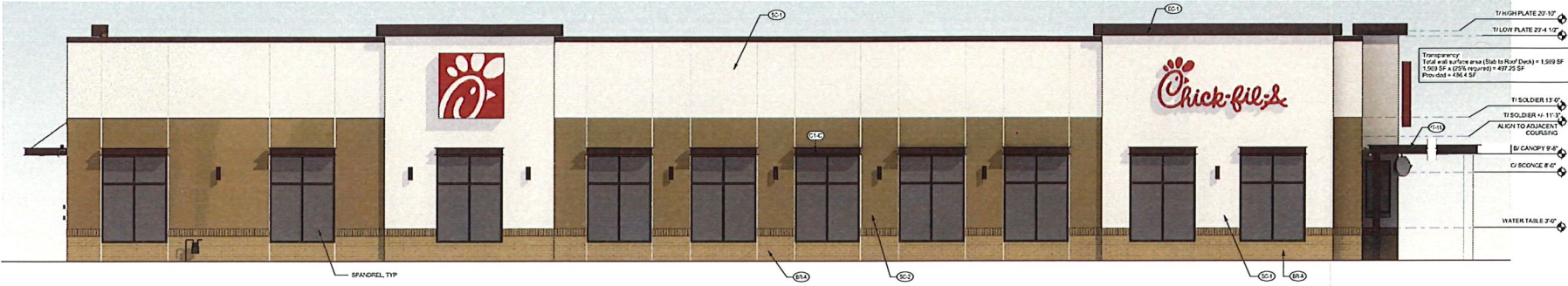
CORE STATES

4210 East Janga Street
Ste 422
Oxnard, CA 91321
www.core-states.com

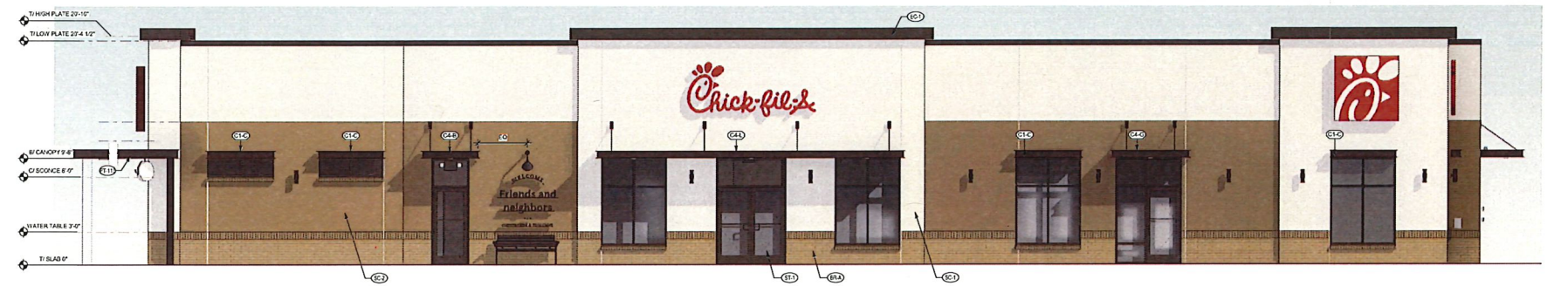
CHICK-FIL-A
COUNTRYSIDE & TOULUMNE
SWC COUNTRYSIDE DR. AND TUOLUMNE RD.
TURLOCK, CA 95380

FSR#05884
BUILDING TYPE: F14LE-B1
218
RELEASE: 08/27/24
PROJECT STATUS: 2408
REVISION SCHEDULE

CONTRACT PROJECT# CFA 19433
218
SHEET# 08/27/24
DATE: 08/27/24
DESCRIPTION: EXTERIOR ELEVATIONS - COLOR
SHEET# 08/27/24



D4 EXTERIOR ELEVATION - NORTH
10' x 1/2"



C4 EXTERIOR ELEVATION - SOUTH
10' x 1/2"



B4 EXTERIOR ELEVATION - EAST
14' x 1/2"



B2 EXTERIOR ELEVATION - WEST
14' x 1/2"

APPROVED BRICK ALTERNATES
(SEE NATIONAL ACCOUNTS LIST FOR CONTACT INFORMATION)

FINISH	MANUFACTURER	MODEL	MORTAR	PLANT LOCATION	PREFERRED REGION(S)
B1A	PRIMARY BRICK				
B1B	MORE BRICK	PALOMA GRAY	JAROS, SAN TAN	ELGIN, TX	SOUTHWEST
B1C	TRIFLUE MATERIALS	TRIFLUE GRAY	JAROS, SAN TAN	USCA, VA	WEST
B1D	GLEN-CERY	KOHO MATT	JAROS, SAN TAN	CHESWICK, PA	ATLANTIC, NORTHEAST, MIDWEST
B1E	CHEERIE BRICK	EIGHT GRAY SMOOTH	JAROS, SAN TAN	WACO, GA	SOUTHEAST
B1F	ACCENT BRICK				
B1G	ACME BRICK	HUSTO WHITE	JAROS, SAN TAN	MINNAPARK, AR	SOUTHWEST
B1H	TRIFLUE MATERIALS	DELIGHT WHITE	JAROS, SAN TAN	USCA, VA	WEST
B1I	GLEN-CERY	WINTERNA	JAROS, SAN TAN	CHESWICK, PA	ATLANTIC, NORTHEAST, MIDWEST
B1J	CHEERIE BRICK	DIAMOND SMOOTH	JAROS, SAN TAN	WACO, GA	SOUTHWEST

FINISH SCHEDULE - EXTERIOR

MARK	DESCRIPTION	MANUFACTURER	MODEL NAME	MODEL NUMBER	COLOR	NOTE
B1A	BRICK VENEER (PRIMARY)	WOODLARK				SEE APPROVED BRICK ALTERNATES
B1B	WOOD COMPOSITE MATERIAL	REYNITA INTERNATIONAL	PACIFIC CLASSIC/104	RESPA812	SOB PALE GOLDEN	
CP-1	CANOPY METAL FASCA	SURA COAT		SC119F-2719		
CP-2	CANOPY METAL DECK					
CP-3	PARVEY WALL COPING	DUROLAST / EXCEPTORIAL METALS			WHITE MIDWIGHT BRONZE	
PT-100	EXTERIOR PAINT	SHERWIN WILLIAMS	SHER-COLOR HIGH PERFORMANCE ACRYLIC 4006-300	SW 2007	ROCKWOOD	REFUSE ENCLOSURE, FINISH SEMI-GLOSS ON DOOR FRAMES, SATIN ON WALLS
PT-113	EXTERIOR PAINT	SHERWIN WILLIAMS	SHER-COLOR HIGH PERFORMANCE ACRYLIC 4006-300	SW 2007	DARK BRONZE	FINISH SEMI-GLOSS
ST-1	STOREFRONT	TYK	TES 45			

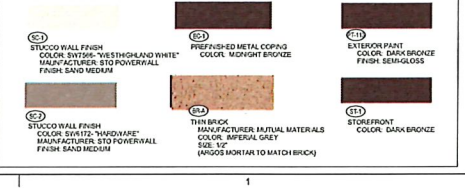
ATTACHED CANOPY SCHEDULE

Mark	Description	Color	Depth	Overall To Back (Mounting Depth)	Height (Mounting Depth)	Lighting
C1C	Column Canopy	16	8'-4"	8'-0"	9'-0"	Yes
C1B	Column Canopy	1	8'-4"	8'-0"	9'-0"	Yes
C1D	Column Canopy	1	7'-4"	8'-0"	9'-0"	Yes
C1E	Column Canopy	1	8'-4"	8'-0"	9'-0"	Yes
C1F	Column Canopy	1	22'-0"	8'-0"	9'-0"	Yes

CANOPY NOTES
BUILDING MOUNTED CANOPIES - 8" THICK CANOPY (OUTRIG FINISH OF STRUCTURE, FASCA & BOSSAGE TO MATCH C1C)
COLUMN MOUNTED CANOPIES - 1" THICK CANOPY - FINISH OF STRUCTURE TO BE C1D (FINISH OF BOSSAGE TO BE C1E)

GENERAL NOTES
1. ALL BOSSAGE PROVIDED BY OTHERS
2. REF. FLOOR PLAN AND WINDOW LEGEND FOR STOREFRONT INFORMATION

EXTERIOR FINISHES



8/15/2024 1:20:25 PM Autodesk Director CADWorx Consultants, A Tulumene Roll 2704 J:\9829984_Countryside.k - Tuolumne, FSJ - ARCH.dwg
 10-16-2024 10:57:51 AM EXTERIOR ELEVATIONS - CADL2