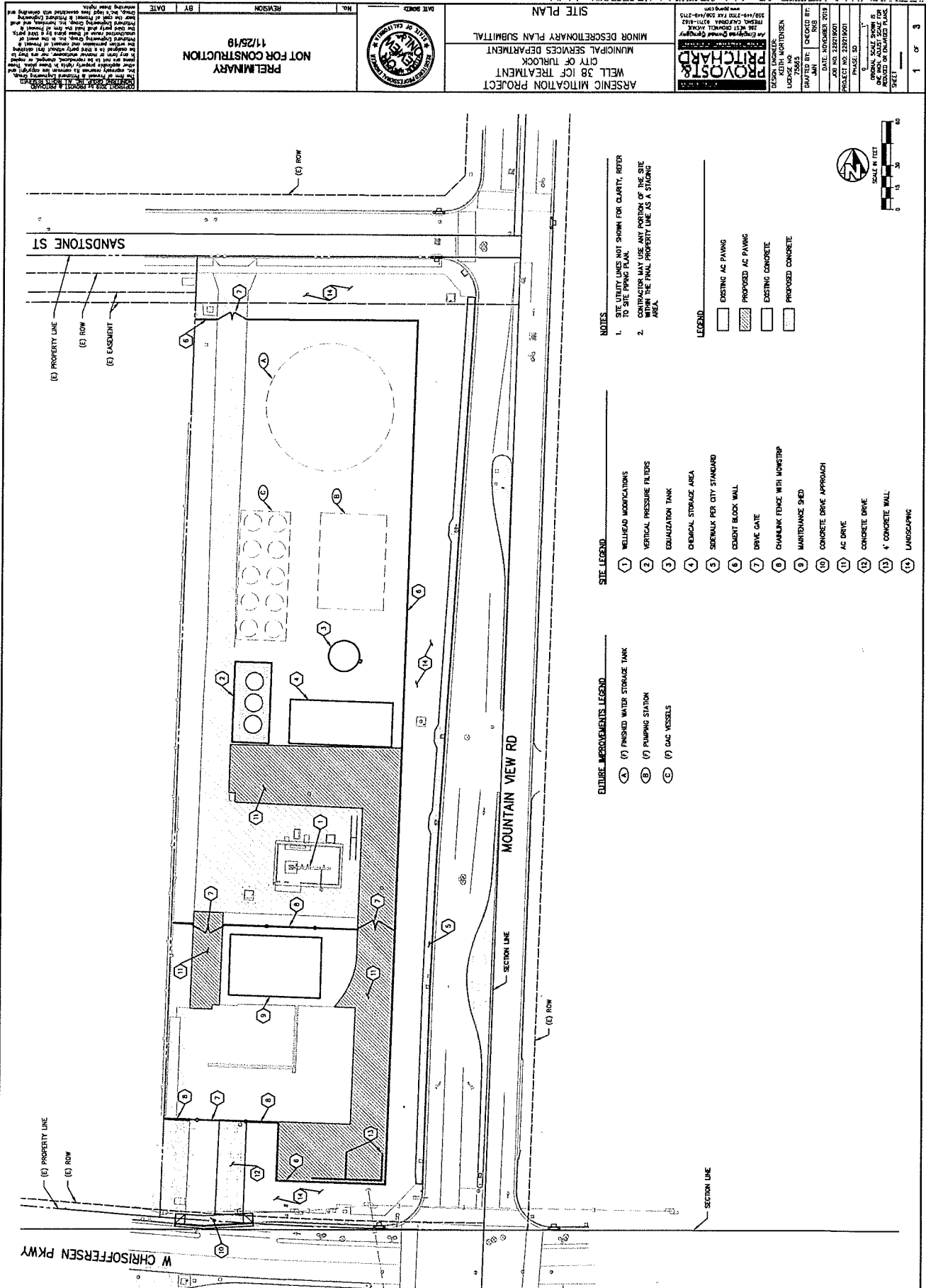


WARNING  
 POWER LINES  
 OVERHEAD



**NOTES**

1. SITE UTILITY LINES NOT SHOWN FOR CLARITY, REFER TO SITE PIPING PLAN.
2. CONTRACTOR MAY USE ANY PORTION OF THE SITE WITHIN THE FINAL PROPERTY LINE AS A STAGING AREA.

**LEGEND**

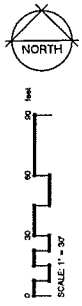
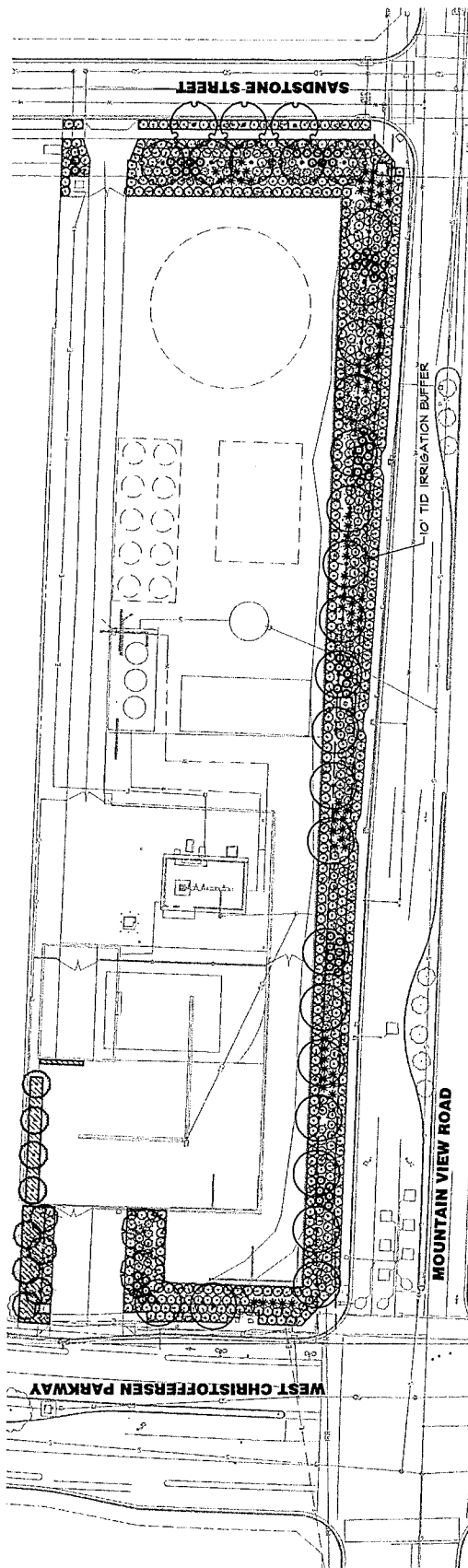
- EXISTING AC PAVING
- PROPOSED AC PAVING
- EXISTING CONCRETE
- PROPOSED CONCRETE

**SITE LEGEND**

- 1 WELLHEAD MODIFICATIONS
- 2 VERTICAL PRESSURE FILTERS
- 3 EQUALIZATION TANK
- 4 CHEMICAL STORAGE AREA
- 5 SIDEWALK PER CITY STANDARD
- 6 CURB/ST BLOCK WALL
- 7 DRIVE GATE
- 8 CHAINLINK FENCE WITH HOVSTOP
- 9 MAINTENANCE SHED
- 10 CONCRETE DRIVE APPROACH
- 11 AC DRIVE
- 12 CONCRETE DRIVE
- 13 CONCRETE WALL
- 14 LANDSCAPING

**EXISTING IMPROVEMENTS LEGEND**

- A FINISHED WATER STORAGE TANK
- B PUMPING STATION
- C GAS VESSELS



**REFERENCE NOTES SCHEDULE**

SYMBOL	DESCRIPTION	QTY
(Symbol)	MULCH - WALK OR PARK	34% CY

**EXISTING PLANT SCHEDULE**

(Symbol)	EXISTING TREE	0
(Symbol)	EXISTING SERVICE	104' 0"

**PLANT SCHEDULE**

TREES	SIZE	WATER USE	QTY
BOZEMAN / L. GAMBOLLA	1 GAL L	5 GAL	3
GALTS ACACIAS COMMON HUCKLEBERRY	1 GAL L	5 GAL	21
PRINCE OF WALES CHERRY PRUNELLA	1 GAL L	5 GAL	7
QUEENSLAND CASTLE LIVE OAK	1 GAL L	5 GAL	5
BOZEMAN / L. GAMBOLLA	1 GAL L	5 GAL	5
ATLANTA X PAINE CASTLE PAINE CASTLE ATLANTA	1 GAL L	5 GAL	5
LANTANA X NEW GOLD NEW GOLD LANTANA	1 GAL L	5 GAL	4
LEISTRUM JAPONICUM JAPANESE PRINCE	1 GAL L	5 GAL	7
MALDENBACH REDS RED GRASS	1 GAL L	5 GAL	4
PENNSYLVANIA EVERGREEN FOUNTAIN GRASS	1 GAL L	5 GAL	4
REDFLOW REDFLOW	1 GAL L	5 GAL	4
ROSEMARY ROSEMARY	1 GAL L	5 GAL	4
WESTERN REDWOOD WESTERN REDWOOD	1 GAL L	5 GAL	4

ARSENIC MITIGATION PROJECT  
WELL 38 ICF TREATMENT  
CITY OF TULSA  
MUNICIPAL SERVICES DEPARTMENT  
MINOR DISCRETIONARY PERMIT SUBMITTAL

LANDSCAPE PLAN

NO. \_\_\_\_\_ REVISION \_\_\_\_\_ DATE \_\_\_\_\_

30% DESIGN SUBMITTAL  
NOT FOR CONSTRUCTION  
11/25/2019

designhab (552)

LANDSCAPE ARCHITECT  
1000 N. W. 10th Ave., Suite 1000  
Tulsa, Oklahoma 74103  
PHONE: 918.438.1111  
FAX: 918.438.1112  
WWW.DESIGNHAB.COM

DATE: NOVEMBER 2019  
JOB NO: 23210001  
PROJECT NO: 23210001  
SHEET NO: 23210001

2 OF 3

