



**MUNICIPAL SERVICES DEPARTMENT**  
ENGINEERING DIVISION  
156 S. BROADWAY, SUITE 150  
TURLOCK, CA 95380

PHONE: (209) 668-5520  
FAX: (209) 668-5563  
TDD: (800) 735-2929  
engineering@turlock.ca.us

---

**Date: 07/31/2025**

**City Project No.: 24-020**

**Addendum No.: 1**

Plan holders:

**Revisions to Plans and Specifications**

The following additions, deletions or modifications shall become part of the Contract Documents:

Strikethrough text (~~text~~) indicates deletions.

Bold Italicized text (**text**) indicates additions.

---

**Project Specifications:**

**Item No. 1** – Bid opening date has been moved to **Wednesday, August 13<sup>th</sup>, 2025** at 9:00 AM. There will be an optional pre-bid meeting held on **Thursday, August 7<sup>th</sup>, 2025** at 9:00 AM at Fire Station No. 32 located at 791 S Walnut Rd, Turlock, CA 95380. Please use the updated bid form below:

# ADDENDUM NO. 1

## BIDDER'S FORM

---

**PROJECT TITLE:** Fire Station No. 32 Window Replacements

**PROJECT NUMBER:** 24-020

**OPENING DATE:** August 13, 2025

**OPENING TIME:** 9:00 AM

Item No.	Item Description	Unit of Measure	Estimated Quantity	Unit Price	Total
1	FS #32 Window Replacements	LS	1		
<b>Subtotal</b>					

Bidder has examined and carefully studied the Bidding documents and other related data identified in the Bidding Documents and the following Addenda, receipt of which is hereby acknowledged

### ADDENDA

No. \_\_\_\_\_ Date \_\_\_\_\_ Signed \_\_\_\_\_

No. \_\_\_\_\_ Date \_\_\_\_\_ Signed \_\_\_\_\_

No. \_\_\_\_\_ Date \_\_\_\_\_ Signed \_\_\_\_\_

No. \_\_\_\_\_ Date \_\_\_\_\_ Signed \_\_\_\_\_

No. \_\_\_\_\_ Date \_\_\_\_\_ Signed \_\_\_\_\_

**TOTAL BID WRITTEN IN FIGURES:** \$ \_\_\_\_\_, \_\_\_\_\_, \_\_\_\_\_ . \_\_\_\_\_

**TOTAL BID WRITTEN IN WORDS:** \_\_\_\_\_

**CONTRACTOR:** \_\_\_\_\_

**Item No. 2** – Section 10.01 is amended to read as follows. Insert the following after 10.01.8 “Submittals and Warranty”:

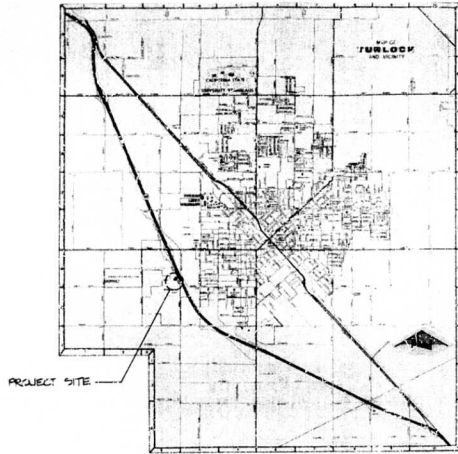
**9. Window Dimensions**

**Dimensions of windows are as follows. Contractor is to verify all measurements in the field prior to ordering windows.**

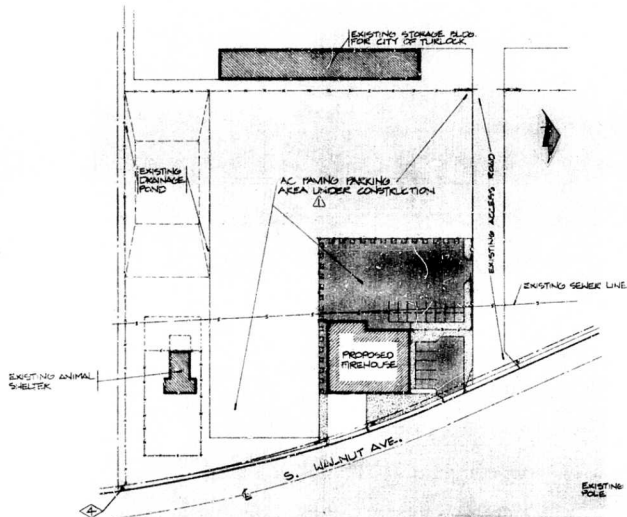
<b>Dimensions</b>			
<b>Window #</b>	<b>Length (ft)</b>	<b>Width (ft)</b>	<b>Area (SF)</b>
1	5	2	10
2	5	2	10
3	3	3	9
4	3	3	9
5	2	3	6
6	2	3	6
7	2	2	4
8	2	3	6
9	2	3	6
10	5	2	10
11	5	2	10
12	5	2	10
13	5	2	10
14	5	2	10
15	5	2	10
16	2	2	4
17	5	2	10
18	5	2	10
19	5	2	10
20	5	2	10

**Item No. 3 – As-Built plans**

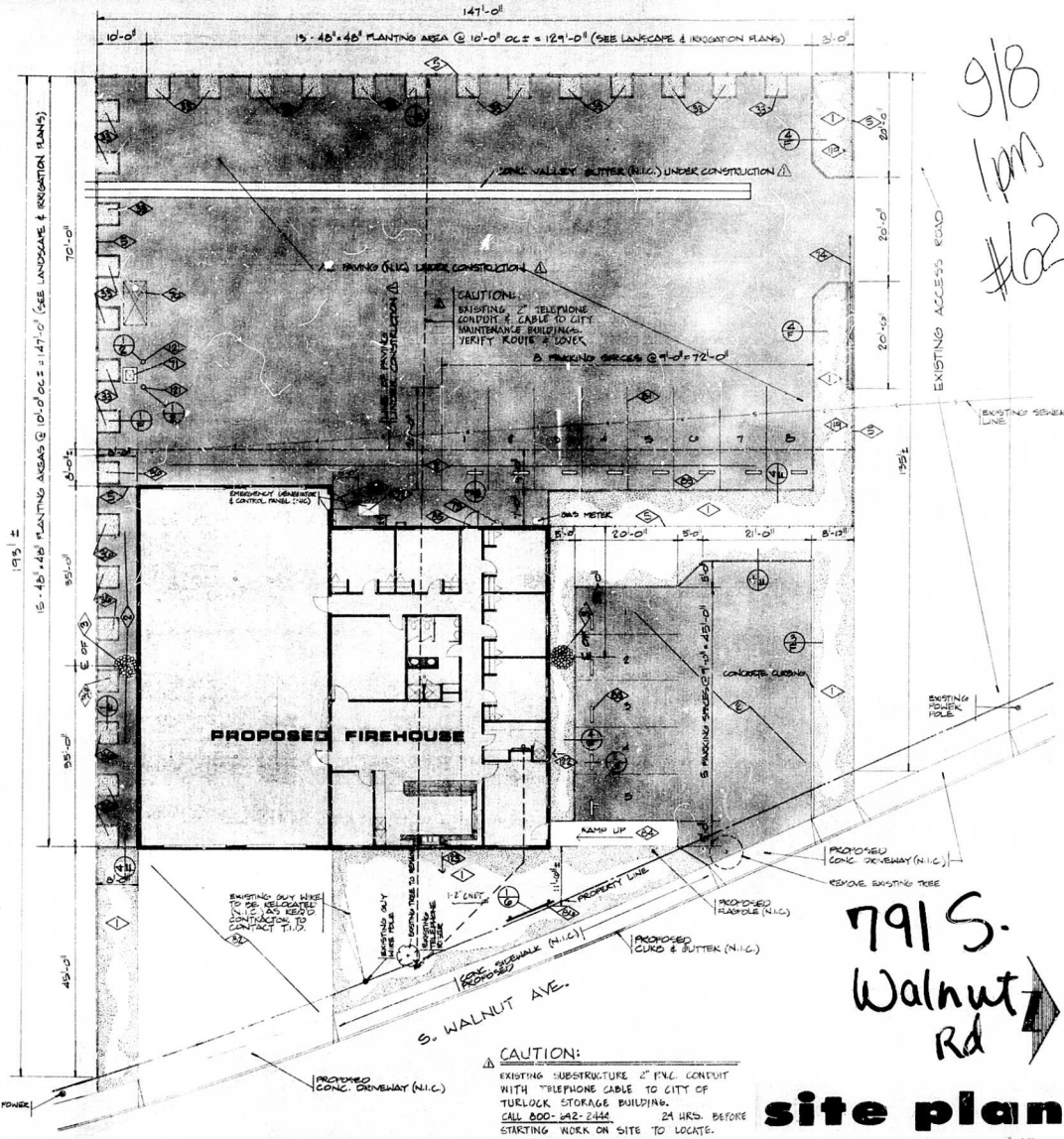
Feel free to reference as-built plans for the Turlock Fire Station No. 32 for reference.



**vicinity map**  
NO SCALE



**plot plan**  
1" = 80'



9/8  
1pm  
#02

**CAUTION:**  
EXISTING SUBSTRUCTURE 2" PVC CONDUIT WITH TELEPHONE CABLE TO CITY OF TURLOCK STORAGE BUILDING. CALL 400-242-2444 24 HRS. BEFORE STARTING WORK ON SITE TO LOCATE.

**site plan**  
1" = 10'

REVISED 7/23/00  
LOCATE EXISTING TEL LINES



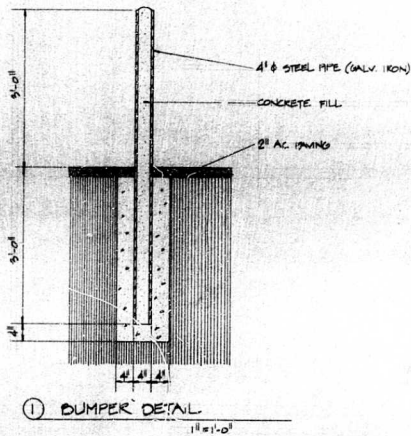
**FRED J. BOZZO - AIA**  
ARCHITECT  
381 EAST GREENWAY AVE.  
CALIFORNIA, 95360  
808-852-8936



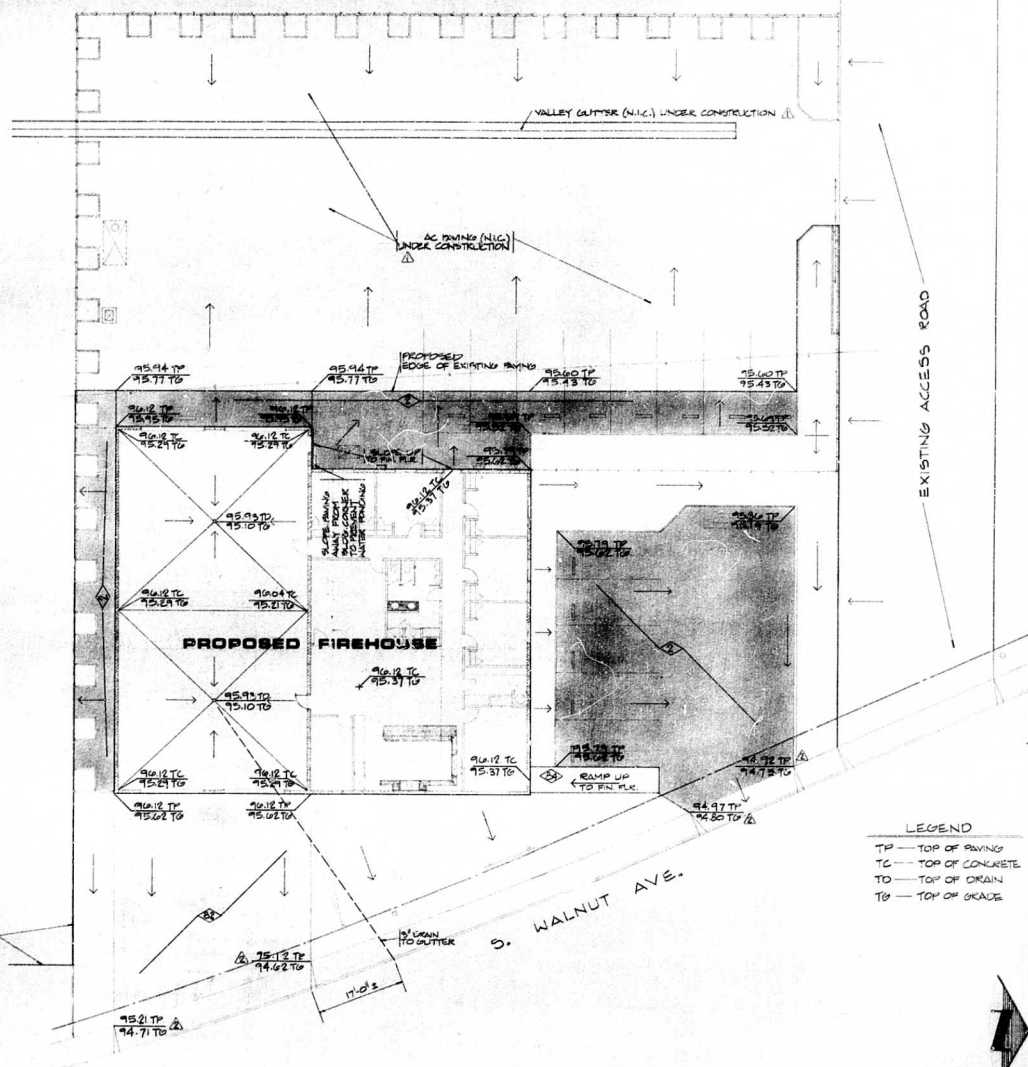
CALIFORNIA

**FIRE STATION NO. 2**  
**CITY OF TURLOCK**  
791 S. WALNUT ROAD  
TURLOCK

SHEET	1
OF 23	
DATE	7/23/00
SCALE	1" = 10'
DESIGNER	
CHECKED	
APPROVED	



EDGE OF AC PAVING (N.I.C.) UNDER CONSTRUCTION



LEGEND  
 TP — TOP OF PAVING  
 TC — TOP OF CONCRETE  
 TD — TOP OF DRAIN  
 TG — TOP OF GRADE

# site grading drainage

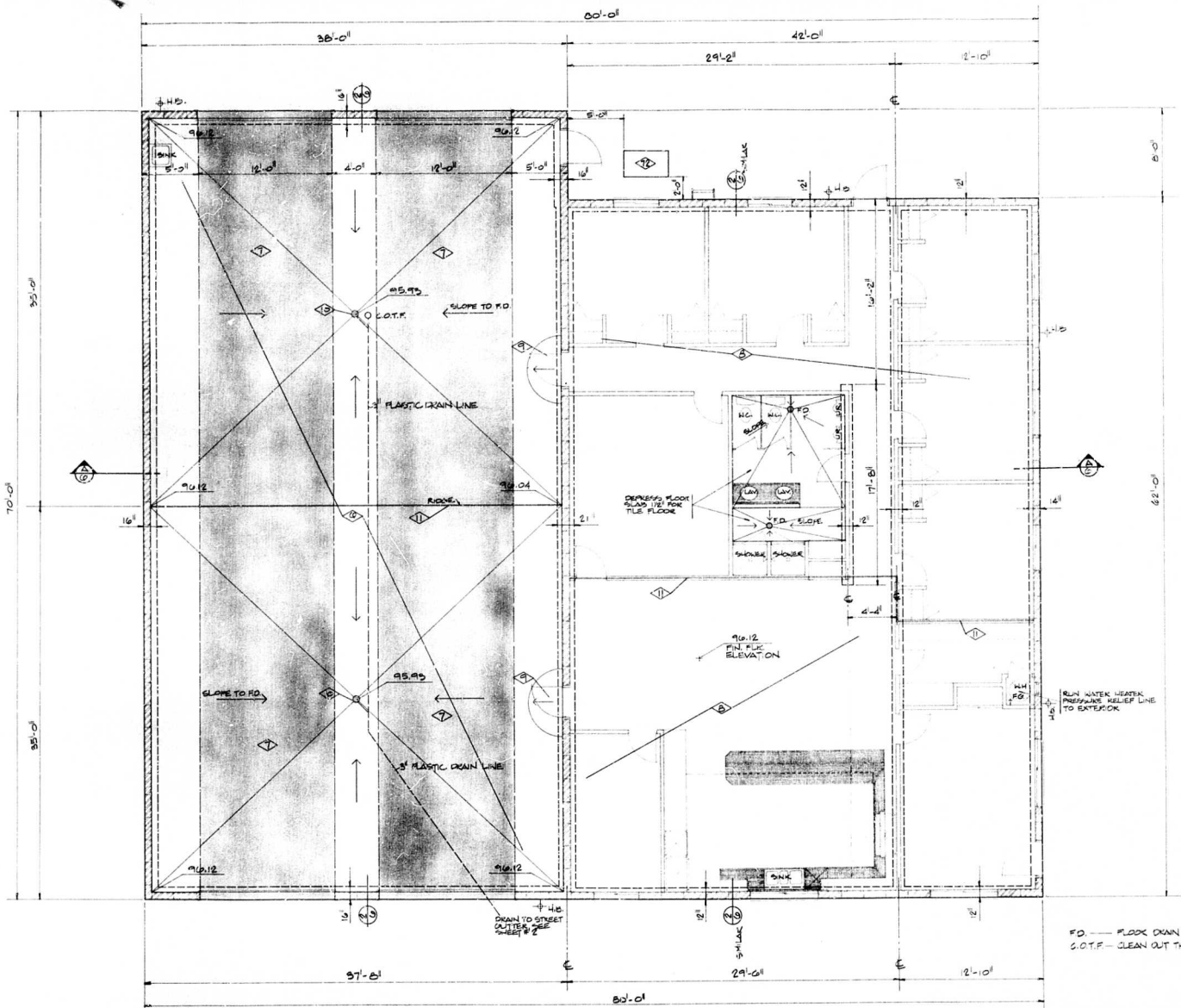
REVISED 5/4/80  
 REVISED 7/23/80

**FRED J. BOZZO - AIA**  
 ARCHITECT  
 887 EAST GREENWAY AVE  
 CALIFORNIA 92684  
 805-282-8814

**FIRE STATION NO. 2**  
**CITY OF TURLOCK**  
 791 S. WALNUT ROAD  
 TURLOCK CALIFORNIA

DATE: 12/2/80  
 DRAWN: GHKE  
 JOB NO: 20101

1"=10'-0"



FD — FLOOR DRAIN  
 C.O.T.F. — CLEAN OUT THRU FLOOR

**foundation**



**FRED J. BOZZO - AIA**  
 ARCHITECT  
 881 EAST GREENWAY AVE  
 TURLOCK, CALIFORNIA 95354  
 209-832-1974



CALIFORNIA

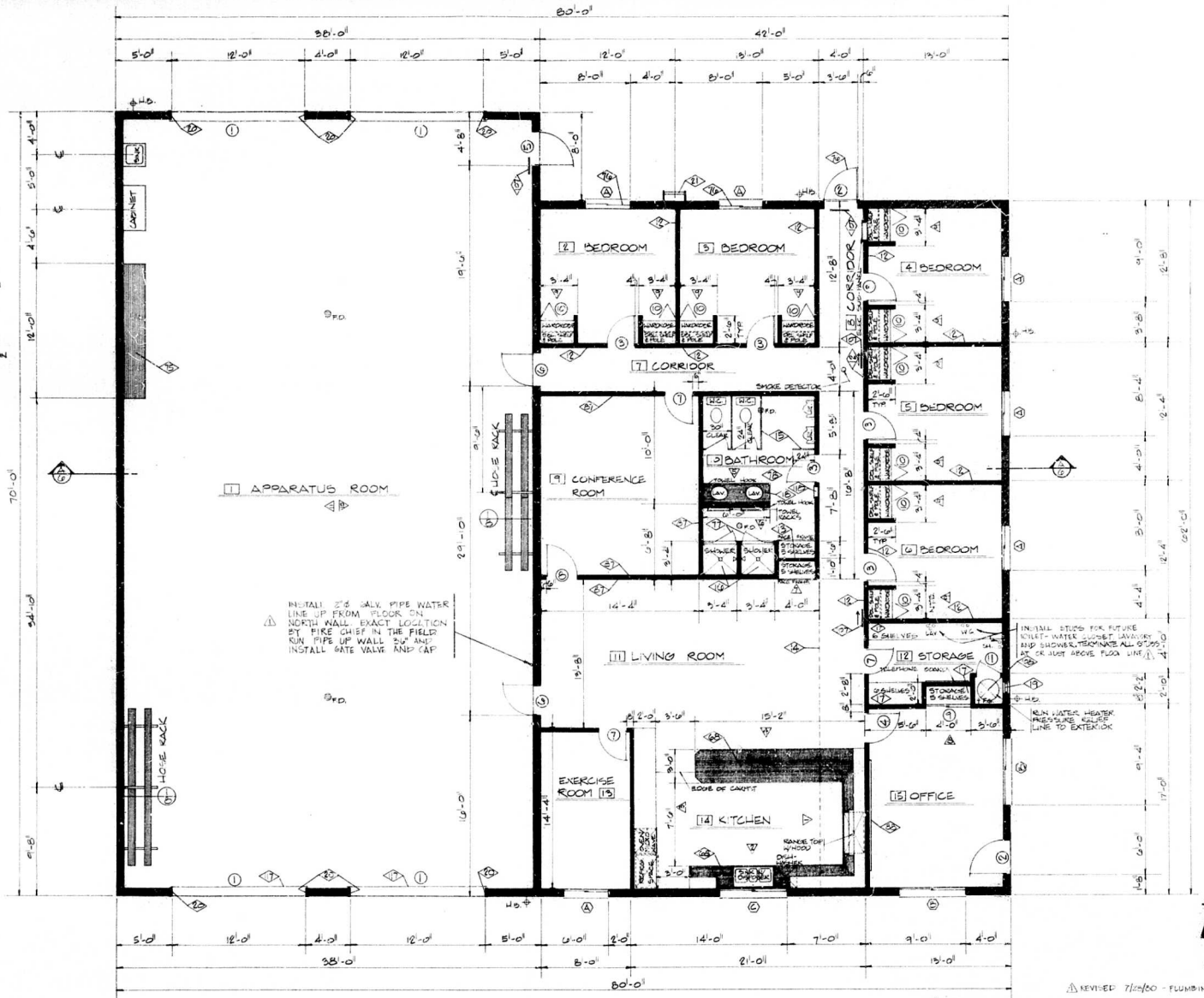
FIRE STATION NO. 2  
**CITY OF TURLOCK**  
 791 S. WALNUT ROAD  
 TURLOCK

DATE	3/27/82	BY	JK
REV		BY	
NO.		DATE	
1			
2			
3			
4			
5			
6			
7			
8			
9			
10			

1/2" = 1'-0"

# ENERGY ANALYSIS

- SEE CALCULATION FORMS
- AREA COOLING DAYS = 2707
- OUTSIDE DESIGN TEMP WINTER = 32°F  
SUMMER = 85°F
- WALLS = CONCRETE BLOCK WITH LOOSE FILL INSULATION IN CHAM CELLS
- CEILING = 6" R-11 FIBERGLASS INSULATION
- CONCRETE SLAB ON GRADE - 8" THICK
- R-11 INSULATION - ALL HOT WATER PIPING TO HAVE CLOSED CELL FURF INSULATION
- DUCTS = FRESH CONDITIONED AIR DUCTS TO BE INSULATED W/1" THICK SLAB W/1" FIBERGLASS SLAB INSULATION OUTSIDE BUILDING ENVELOPE AS REQUIRED



APPARATUS ROOM

INSTALL 2" S.W. GALV. PIPE WATER LINE UP FROM FLOOR ON NORTH WALL EXACT LOCATION BY FIRE CHIEF IN THE FIELD RUN PIPE UP WALL 2" AND INSTALL GATE VALVE AND CAP

INSTALL STOPS FOR FUTURE KITCHEN WATER SINK, LAVATORY AND SHOWER. TERMINATE ALL STOPPS AT OR JUST ABOVE FLOOR LINE.

NEW WATER HEATER PRESSURE GAUGE LINE TO EXTERIOR

WALL LEGEND  
 8" G x 24 CONC. BLK  
 2" G ST. @ 24" O.C.

floor plan



FRED J. BOZZO - AIA  
 ARCHITECT  
 587 EAST GREENWAY AVE  
 CALIFORNIA 95320  
 916-872-8974



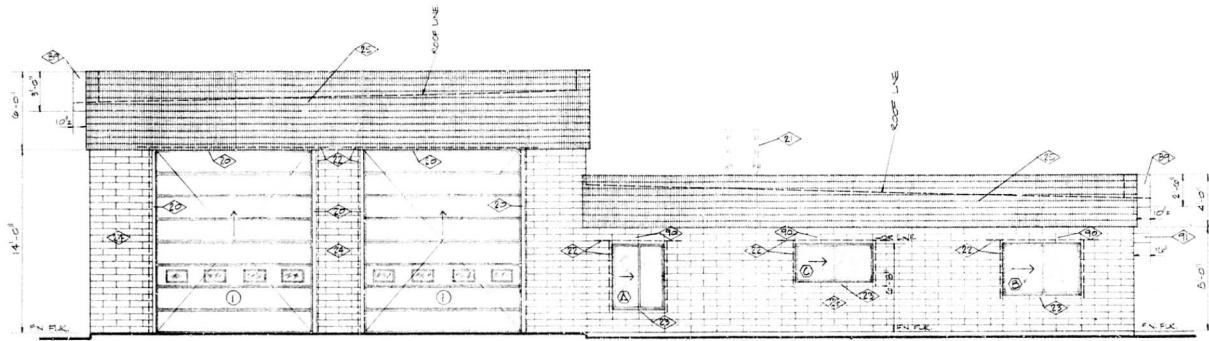
CALIFORNIA

FIRE STATION NO. 2  
 CITY OF TURLOCK  
 791 S. WALNUT ROAD  
 TURLOCK

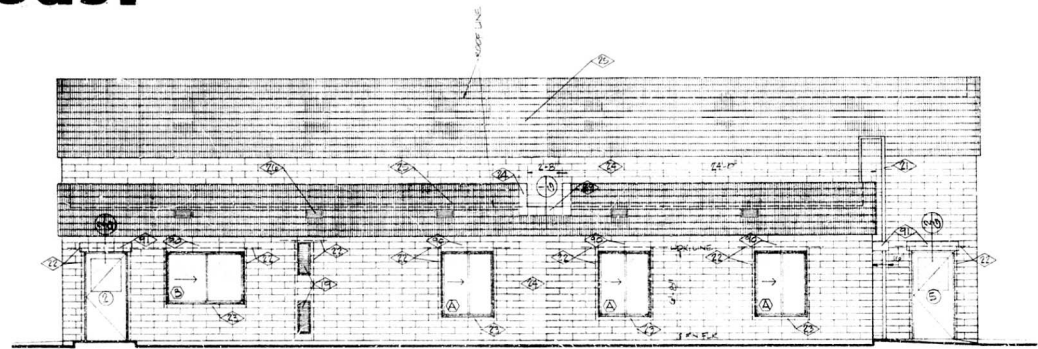
SHEET  
**4**  
 OF 5  
 DRAWN BY  
 DATE  
 CHECKED BY  
 DATE

1/4" = 1'-0"

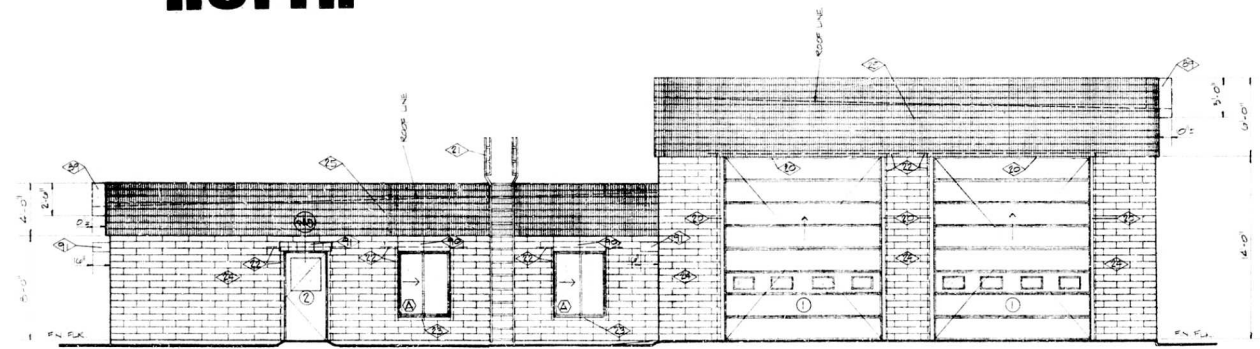




**east**



**north**



**west**

**elevations**



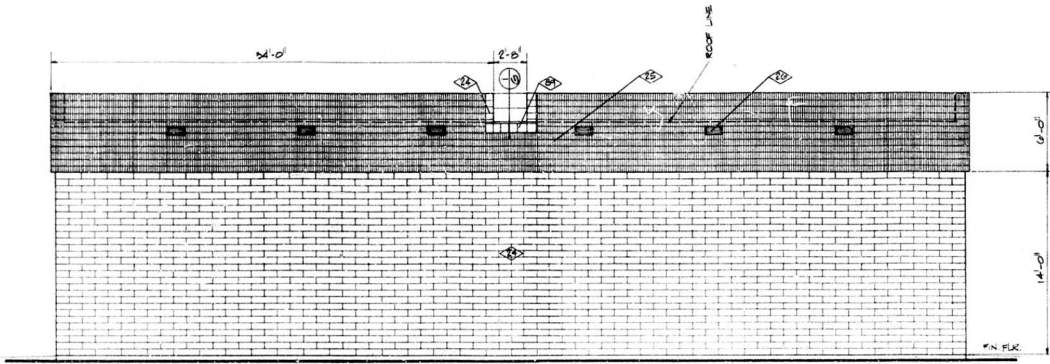
**FRED J. BOZZO - AIA**  
 ARCHITECT  
 881 EAST GREENWAY AVE  
 CALIFORNIA 90302  
 808-232-8814



**FIRE STATION NO. 2**  
**CITY OF TURLOCK**  
 791 S. WALNUT ROAD  
 TURLOCK CALIFORNIA

DATE	CHKD
BY	
DATE	
BY	
DATE	
BY	

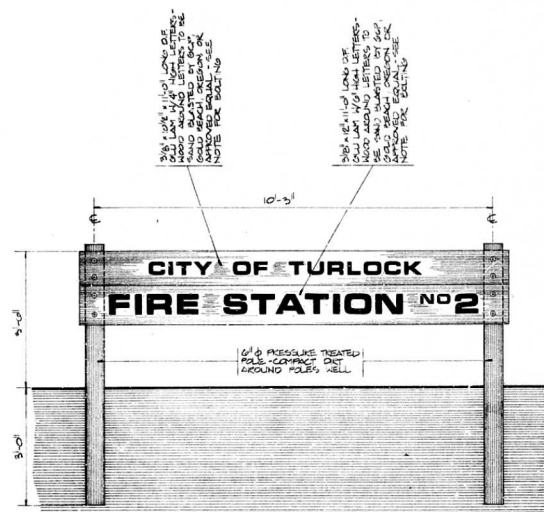




**south**

**elevations**

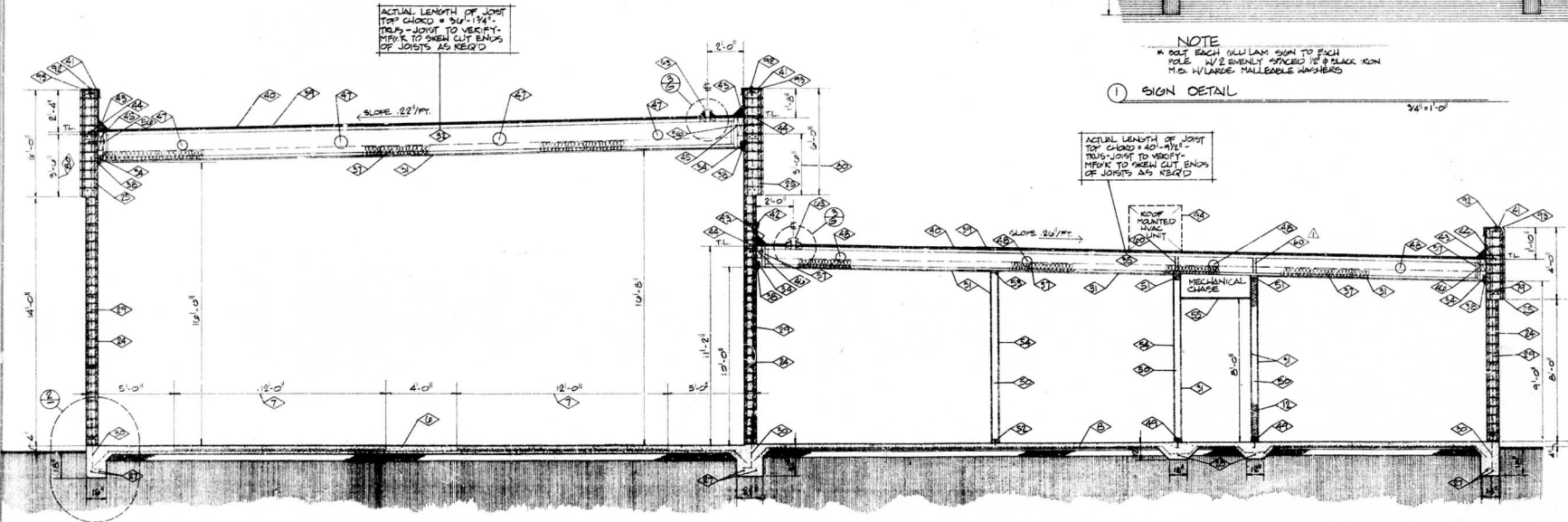
1/4" = 1'-0"



**NOTE**  
 \* POST EACH GULLY LAM SIGN TO EACH POLE 1/2" SPACED TO 8" BLACK KON 1/2" W/ LARGER MALLEABLE WASHERS

① SIGN DETAIL

3/4" = 1'-0"



ACTUAL LENGTH OF JOIST TOP CHORD = 40' - 1 1/4"  
 THIS JOIST TO VERIFY - PINK TO OPEN CUT ENDS OF JOISTS AS REQ'D

ACTUAL LENGTH OF JOIST TOP CHORD = 40' - 1 1/4"  
 THIS JOIST TO VERIFY - PINK TO OPEN CUT ENDS OF JOISTS AS REQ'D

**a.a cross section**

TL = TOP OF LEADER

REVISD 7/20/00 - TJ BLOCKING PANELS



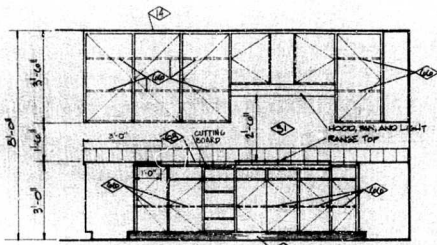
**FRED J. BOZZO - AIA**  
 ARCHITECT  
 841 EAST GOSHAWK AVE  
 CALIFORNIA 95380  
 TEL: 925-832-8914  
 FAX: 925-832-8914



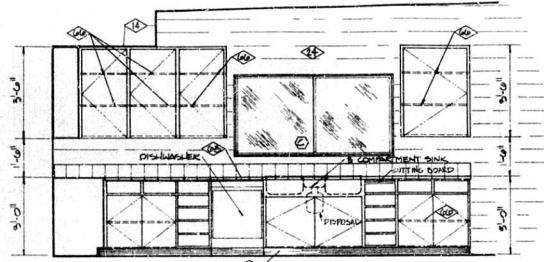
CALIFORNIA

**FIRE STATION NO. 2**  
**CITY OF TURLOCK**  
 791 S. WALNUT ROAD  
 TURLOCK

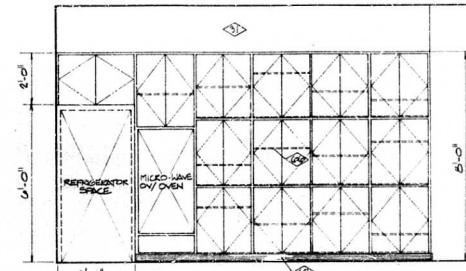
0  
 01 33  
 02 34  
 03 35  
 04 36  
 05 37  
 06 38  
 07 39  
 08 40  
 09 41  
 10 42  
 11 43  
 12 44  
 13 45  
 14 46  
 15 47  
 16 48  
 17 49  
 18 50  
 19 51  
 20 52  
 21 53  
 22 54  
 23 55  
 24 56  
 25 57  
 26 58  
 27 59  
 28 60  
 29 61  
 30 62  
 31 63  
 32 64  
 33 65  
 34 66  
 35 67  
 36 68  
 37 69  
 38 70  
 39 71  
 40 72  
 41 73  
 42 74  
 43 75  
 44 76  
 45 77  
 46 78  
 47 79  
 48 80  
 49 81  
 50 82  
 51 83  
 52 84  
 53 85  
 54 86  
 55 87  
 56 88  
 57 89  
 58 90  
 59 91  
 60 92  
 61 93  
 62 94  
 63 95  
 64 96  
 65 97  
 66 98  
 67 99  
 68 100



▲ KITCHEN - NORTH WALL

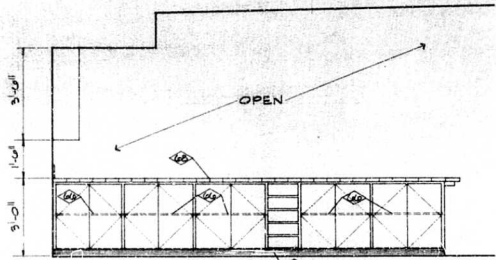


▲ KITCHEN - EAST WALL

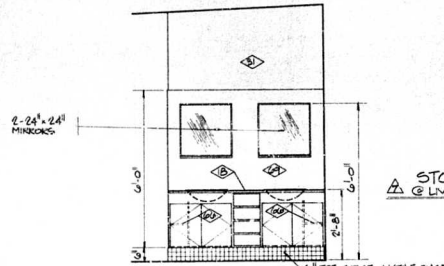


▲ KITCHEN - SOUTH WALL

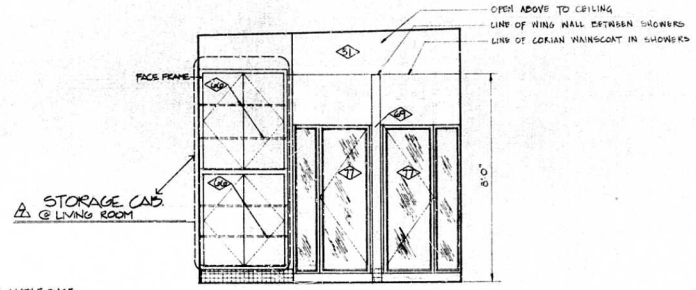
NOTE  
\* EACH COMPARTMENT HAS ONE



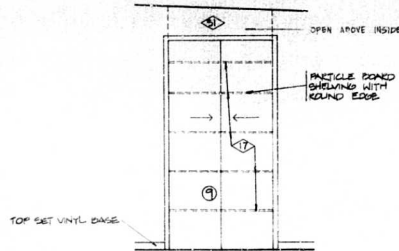
▲ KITCHEN - COUNTER FROM LIVING ROOM



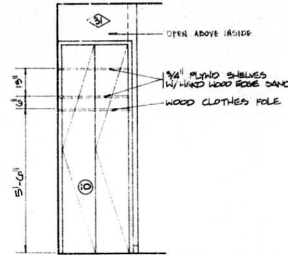
▲ BATHROOM - LAV WALL



▲ BATHROOM - SHOWER WALL



▲ OFFICE



▲ BEDROOM - TYPICAL



FRED J. BOZZO - AIA  
ARCHITECT  
TURLOCK  
8551 GREENWAY AVE  
TURLOCK, CA 95264

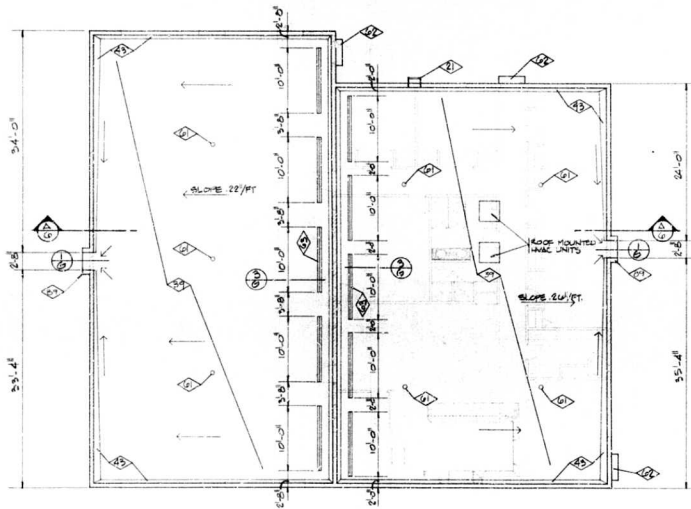


CALIFORNIA

FIRE STATION NO. 2  
CITY OF TURLOCK  
791 S. WALNUT ROAD  
TURLOCK

SHEET  
7  
DATE  
FOR

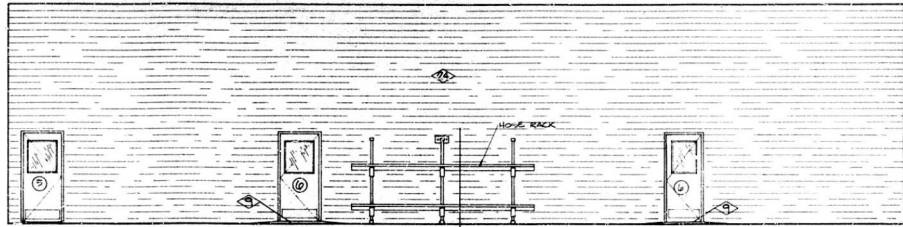
interiors



NOTE: PROVIDE ELECTRICAL AND NATURAL GAS LINES AND RISERS FOR FIRE ALARM SYSTEMS. GAS LINES FOR ALTERNATE #2 ONLY.

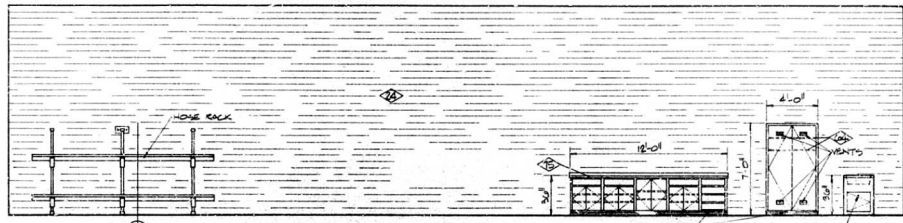
# roof plan

1/8" = 1'-0"



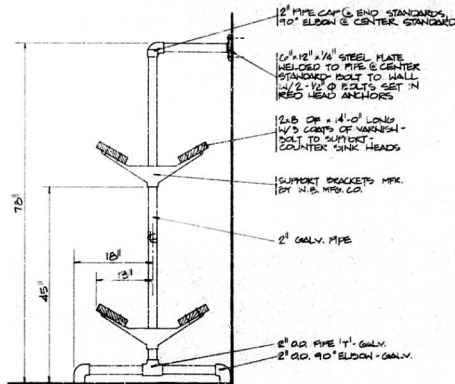
APPARATUS ROOM - NORTH WALL

1/4" = 1'-0"



APPARATUS ROOM - SOUTH WALL

1/8" = 1'-0"



1 HOSE RACK DETAIL

NOTE: MAKE 2'-14'-0" LONG RACKS



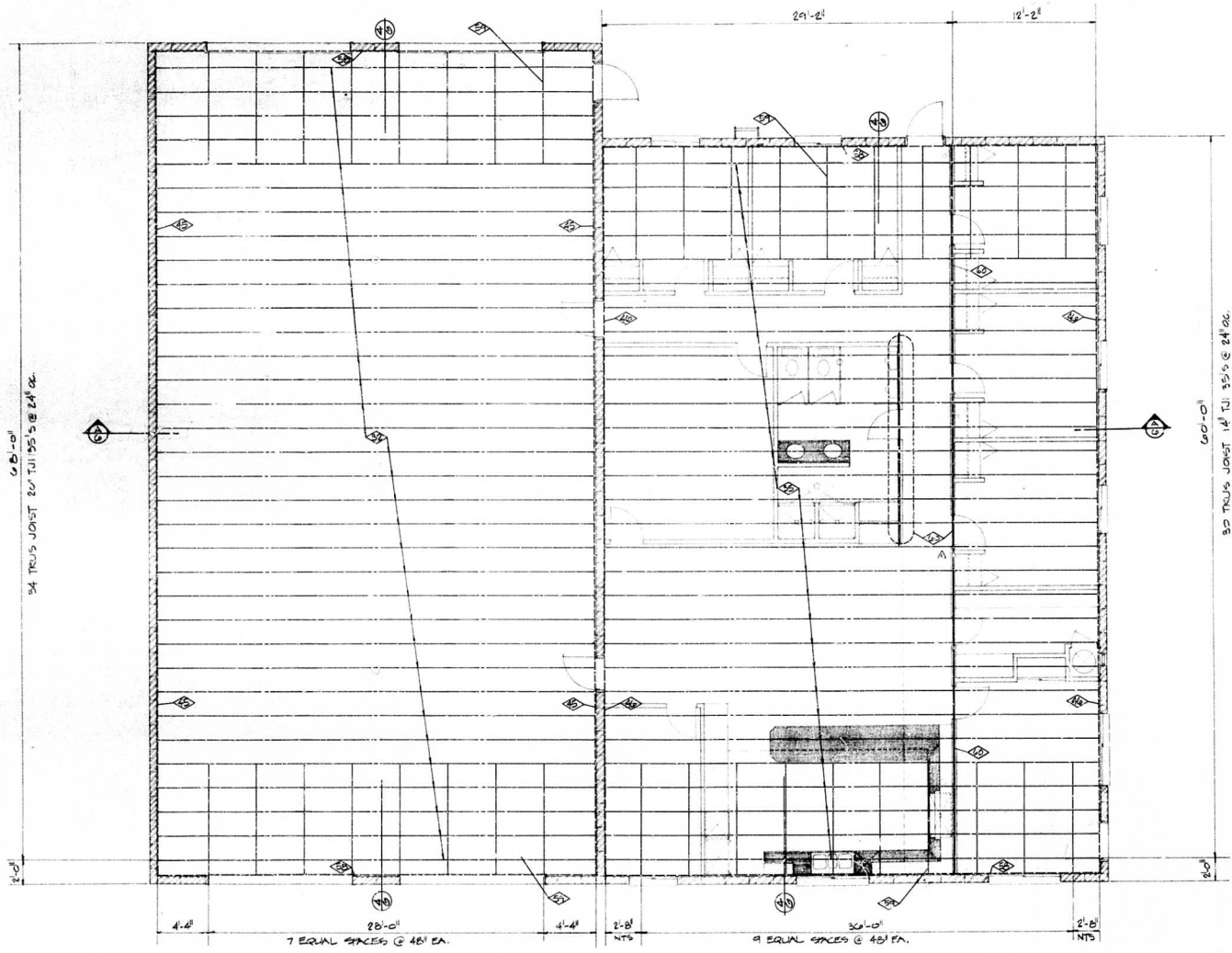
FRED J. BOZZO - AIA  
ARCHITECT  
881 EAST GREENWAY AVE  
TURLOCK  
CALIFORNIA 95354  
888-834-0374



CITY OF TURLOCK  
FIRE STATION NO. 2  
791 S. WALNUT ROAD  
TURLOCK  
CALIFORNIA

SHEET  
**8**  
DATE  
SCALE  
BY  
CHECKED  
APPROVED

interiors



60'-0"  
34 TRUSS JOIST 14' TJI 35'S @ 24" OC

60'-0"  
35 TRUSS JOIST 14' TJI 35'S @ 24" OC

28'-0"  
7 EQUAL SPACES @ 4ft EA.

30'-0"  
9 EQUAL SPACES @ 4ft EA.

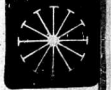
△ REVISED 7/20/00 - BLOCKING ANGLES

# roof framing

1/4" = 1'-0"

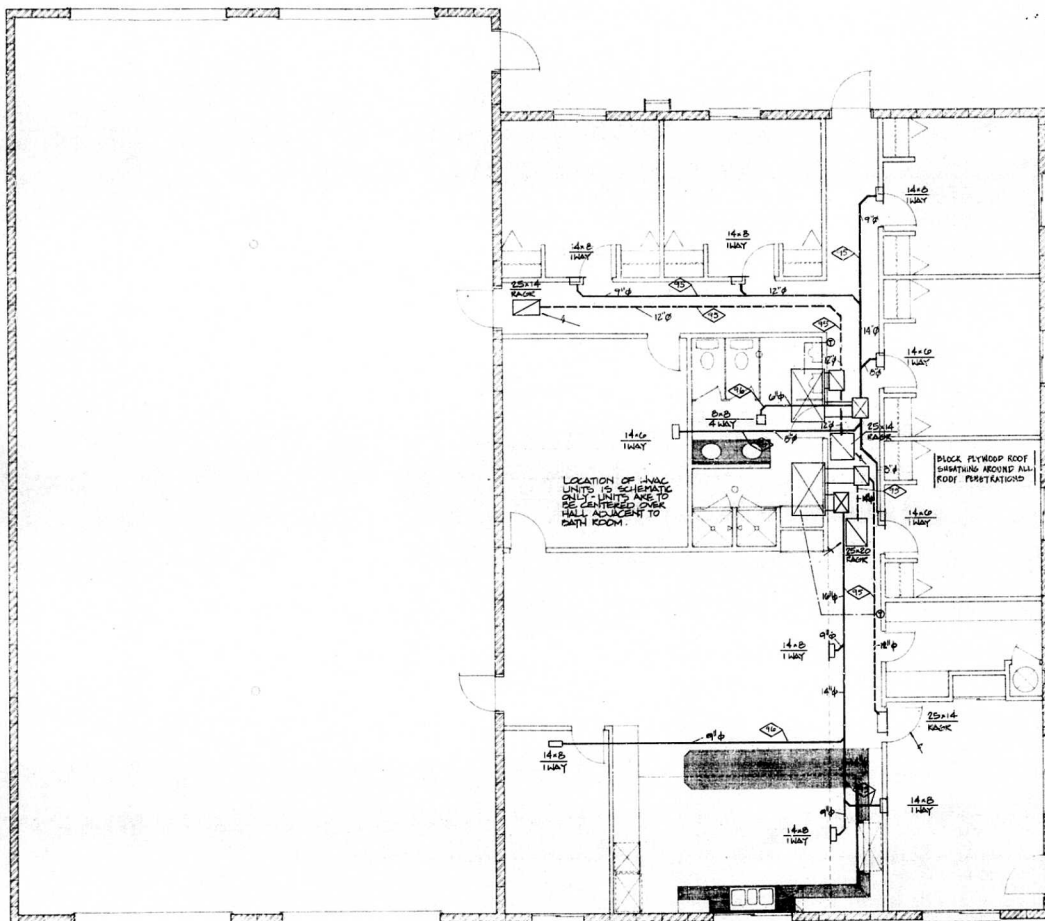


**FRED J. BOZZO - AIA**  
ARCHITECT  
TURLOCK  
885 EAST GREENWAY AVE  
CALIFORNIA 95380  
888-528-0814



**FIRE STATION NO. 2**  
**CITY OF TURLOCK**  
791 S. WALNUT ROAD  
TURLOCK  
CALIFORNIA

DATE	BY	CHKD
07/20/00	JTB	JTB
08/02/00	JTB	JTB
08/02/00	JTB	JTB



NOTE  
A CONDENSATION LINE TO RUN INTO  
VENT STACK

NOTE - TWO UNITS REQUIRED

HEAT PUMP  
GENERAL ELECTRIC PACKAGE HEAT PUMP  
MODEL # BNLG 3UE 300A (200/230V/3-φ)

⊙ THERMOSTAT - ROBERT-SHAW TX-400 W/HEATING/COOLING SUB-BASE

Δ REVISED 7/26/60 - HEAT PUMP MODEL NO 5

**hvac**



FRED J. BOZZO - AIA  
ARCHITECT  
387 EAST OBSERVATORY AVE  
CALIFORNIA 95380  
TURLOCK  
953-928-8914



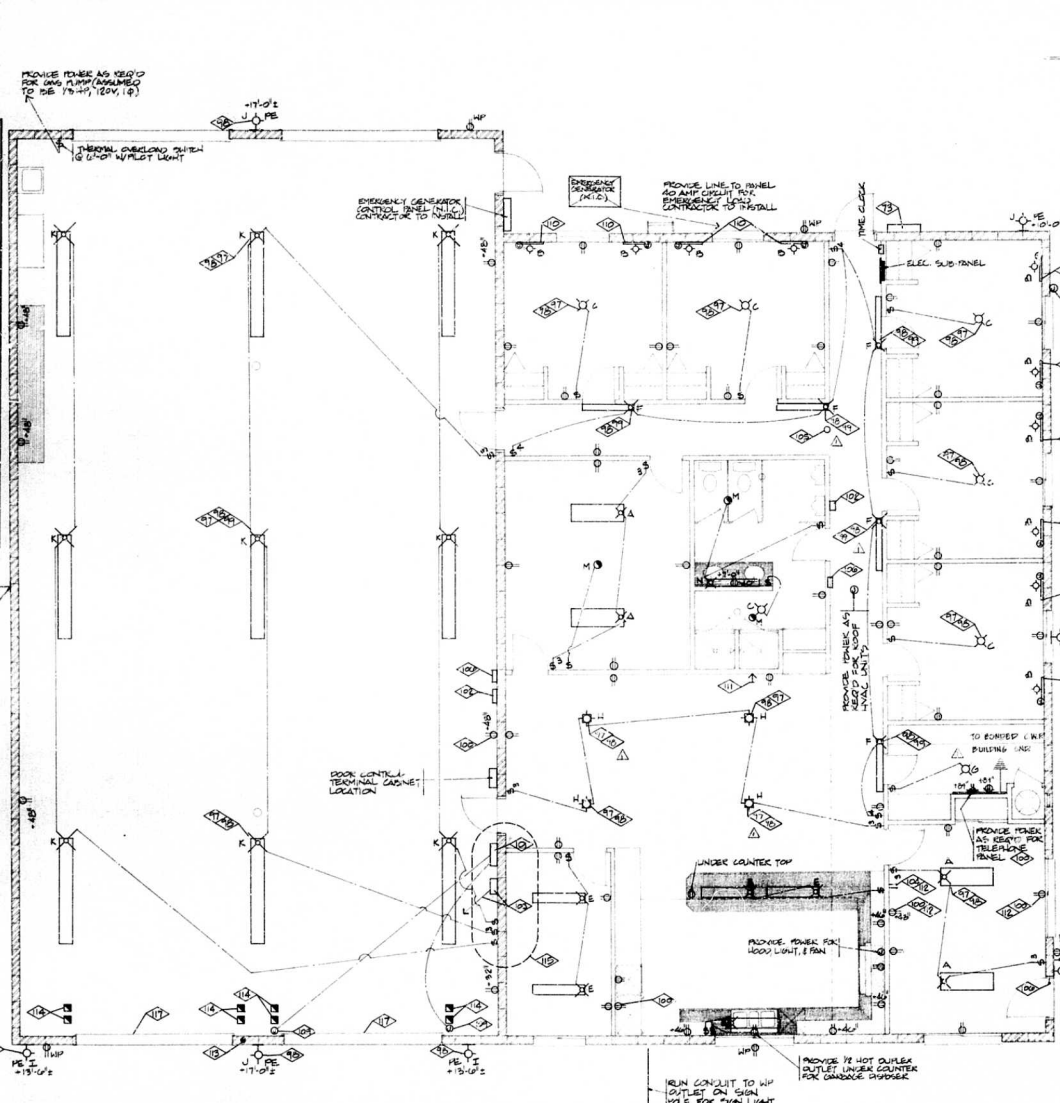
FIRE STATION NO. 2  
CITY OF TURLOCK  
791 S. WALNUT ROAD  
TURLOCK  
CALIFORNIA

SHEET  
**10**  
DATE 9-23-60  
DRAWN BY [Signature]  
CHECKED BY [Signature]



**electric fixture schedule**

Fixt. No.	Manufacturer	Model	Description	Quantity	Remarks
A	HELLER	20-WATT	FLUORESCENT	4-10'S	
B	HALO	L-75H	1-LIGHT RECP TRACK (HEAVY)	1-20' (2)	
C	PROGRESS	PT-110	2-LIGHT RECP TRACK (HEAVY)	1-20' (2)	
D	PROGRESS	PT-110	2-LIGHT RECP TRACK (HEAVY)	1-20' (2)	
E	HELLER	20-WATT	FLUORESCENT	1-10'S	
F	ALICO	20-WATT	FLUORESCENT	1-10'S	
G	HELLER	20-WATT	FLUORESCENT	1-10'S	
H	HELLER	20-WATT	FLUORESCENT	1-10'S	
I	HELLER	20-WATT	FLUORESCENT	1-10'S	
J	HELLER	20-WATT	FLUORESCENT	1-10'S	
K	HELLER	20-WATT	FLUORESCENT	1-10'S	
L	HELLER	20-WATT	FLUORESCENT	1-10'S	
M	HELLER	20-WATT	FLUORESCENT	1-10'S	
N	HELLER	20-WATT	FLUORESCENT	1-10'S	
O	HELLER	20-WATT	FLUORESCENT	1-10'S	
P	HELLER	20-WATT	FLUORESCENT	1-10'S	
Q	HELLER	20-WATT	FLUORESCENT	1-10'S	
R	HELLER	20-WATT	FLUORESCENT	1-10'S	
S	HELLER	20-WATT	FLUORESCENT	1-10'S	
T	HELLER	20-WATT	FLUORESCENT	1-10'S	
U	HELLER	20-WATT	FLUORESCENT	1-10'S	
V	HELLER	20-WATT	FLUORESCENT	1-10'S	
W	HELLER	20-WATT	FLUORESCENT	1-10'S	
X	HELLER	20-WATT	FLUORESCENT	1-10'S	
Y	HELLER	20-WATT	FLUORESCENT	1-10'S	
Z	HELLER	20-WATT	FLUORESCENT	1-10'S	



- LEGEND**
- WP WATERPROOF
  - PE CONNECT TO PHOTO-ELECTRIC CELL WHEN ALARM IS ACTIVATED
  - 2 TELEVISION OUTLET CONNECTED TO ROOF MOUNTED ANTENNA
  - EXHAUST FAN
  - DUXER OUTLET -120V
  - SINGLE 240 V OUTLET

**PROJECT NOTES**

- 97 THIS LIGHT CONNECTED TO ALARM SYSTEM, A TELEPHONE SYSTEM ACTIVATED ALARM SYSTEM ACTIVATES A 90 SECOND TIMER AND A RESET RELAY. PROVIDE INTERFACE AS REQUIRED BY AND LOCATED BY TELEPHONE COMPANY.
- 98 THIS LIGHT TO BE CONNECTED TO EMERGENCY GENERATOR SYSTEM.
- 99 THIS LIGHT IS A NIGHT LIGHT AND CONNECTED TO TIME CLOCK.
- 100 THIS OUTLET TO BE CONNECTED TO EMERGENCY GENERATOR SYSTEM.
- 101 SWITCH CONTROL BOX FOR THE 2 FRONT POWER OPERATED OVERHEAD ROLL-UP DOORS. EACH DOOR TO HAVE "STOP-TONNY" SWITCHES.
- 102 ALARM BUZZER CONNECTED TO ALARM SYSTEM RELAY BY TELEPHONE COMPANY. PROVIDE BACKER BOX, BUZZER N.I.C.-BY CITY. PROVIDE INTERFACE AS REQUIRED BY TELEPHONE COMPANY.
- 103 AUTOMATIC CONTROL LIGHT SWITCH TO 4 - INSTALL PUSH BUTTON CONNECTED TO NO SECOND TIMER AND RESET RELAY. RUN 3/4" CONDUIT WITH 3 - #10 WIRE FROM PUSH BUTTON BOX TO POWER POLE JUST SOUTH OF DRIVEWAY AT STREET. AUTOMATIC CONTROL, PUSH BUTTON AND POLE TO POLI. WIRING N.I.C.-BY CITY.
- 104 RUN 3/4" CONDUIT FROM OFFICE TO ABOVE ROOF LINE NEAR APPARATUS NORTH MASONRY WALL FOR RADIO ANTENNA LEAD-INS. ANTENNA N.I.C.-BY CITY.
- 105 SMOKE DETECTOR - NUTONE S-245 WITH 12V DC SUPPLY.
- 106 HURONE DOOR CHIME SYSTEM. PUSH BUTTON AT OFFICE DOOR TO BE #PB14. PROVIDE BUTTON IN DOOR FRAME TO ACTIVATE CHIME WHEN DOOR IS OPENED. FLUSH INSTALL CHIME LB-14 IN CORRIDOR AND SURFACE MOUNT IN APPARATUS ROOM.
- 107 JUNCTION BOX FOR ROLL-UP DOOR MOTOR.
- 108 PROVIDE JUNCTION BOX # 48" x 48" AND INSTALL HORIZONTAL POWER TRACK. TO BE VERIFIED IN FIELD PRIOR TO INSTALLATION BASED ON BESS TO BE USED.
- 109 RUN ONE CONDUIT TO ROOF FOR ROTATING ANTENNA CONTROL WIRE AND ONE CONDUIT FOR ANTENNA RECEPTION WIRE.

**NOTES**

- 1 ALARM SYSTEM IS LOW VOLTAGE RUN OVER TELEPHONE LINES FROM CENTRAL CONTROL AT POLICE STATION. WHEN CALL COMES OVER THE TELEPHONE AND RECEIVER IS LIFTED, A RELAY CONNECTED TO ALARM BUZZERS IS ACTIVATED AND BUZZER CONTINUES UNTIL TELEPHONE RECEIVER IS PUT DOWN ON SET. ALSO, WHEN CALL COMES IN AND RECEIVER IS LIFTED, A 90 SECOND TIME CLOCK IS ACTIVATED WHICH TURNS ON ALARM LIGHTS AND A RELAY IS USED TO RESET SYSTEM.
- 2 AUTOMATIC APPARATUS ROOM EAST DOORS ARE ACTIVATED TO OPEN BY BUTTON ON WALL BY FIRE CREW AND DOOR IS THEN ACTIVATED TO CLOSE BY REMOTE RADIO CONTROL IN EMERGENCY VEHICLE.
- 3 AUTOMATIC CONTROL LIGHT ON POLE DOWN THE STREET BY ANIMAL CONTROL SHELTER IS ACTIVATED BY CREW PUSHING A BUTTON ON WALL IN APPARATUS ROOM WHICH WILL ACTIVATE A 90 SECOND TIMER.
- 4 DOOR INSTALLER TO FURNISH & INSTALL RADIO CONTROLLED DOORS & RELATED EQUIPMENT & FURNISH ONLY HOLD OPEN SENSORS. ELECTRICALIAN TO DO ALL WIRING UP TO RADIO DOOR MOTORS, INSTALL SWITCHES (NOTE #10), INSTALL SENSORS (NOTE #11) SUPPLIED BY DOOR INSTALLER, AND ALL REQUIRED CONDUIT, DOWNS, & WIRING TO COMPLETE OPERATION.

△ REVISED 7/23/80  
ALARM ACTIVATED LIGHTS

**electrical**



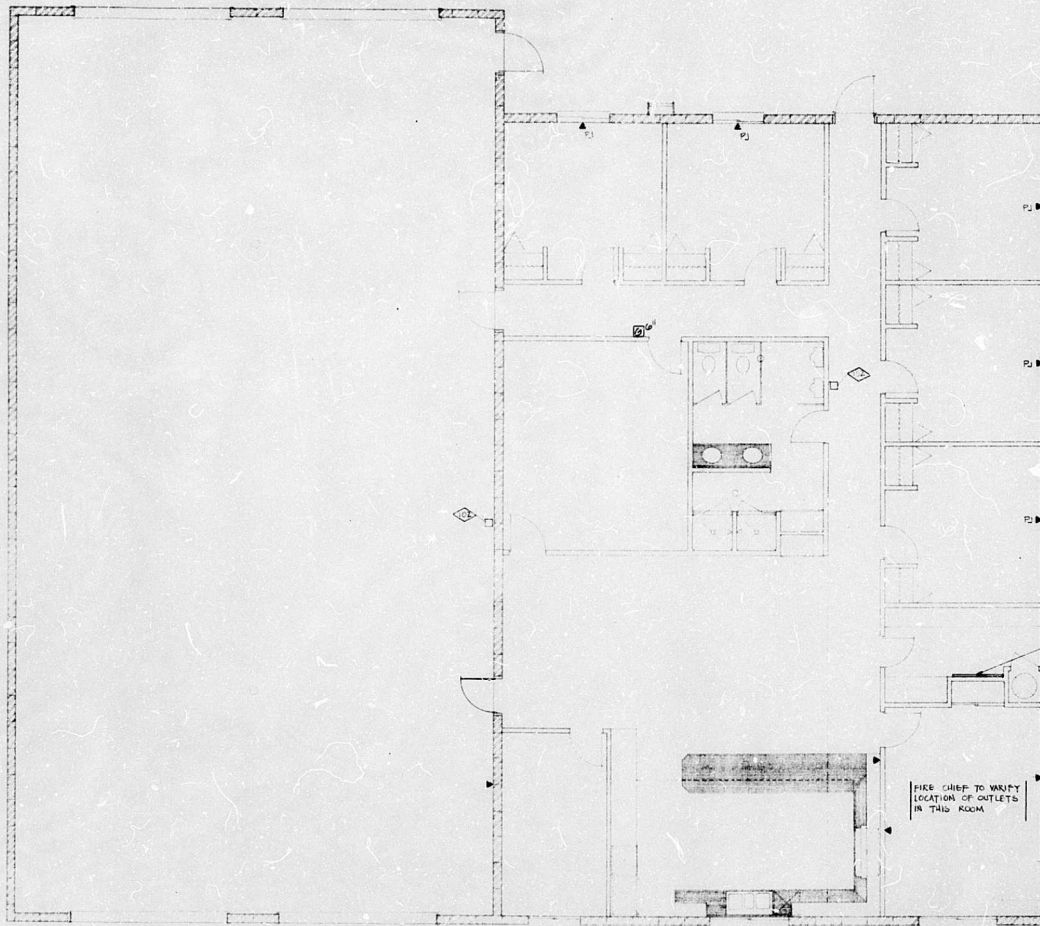
**FRED J. BOZZO - AIA**  
ARCHITECT  
88 - EAST OREGONWAY AVE  
CALIFORNIA 95520  
TEL: 438-8816



CALIFORNIA

**FIRE STATION NO. 2**  
**CITY OF TURLOCK**  
791 S. WALNUT ROAD  
TURLOCK

Sheet 11  
DATE: 7/23/80  
BY: [Signature]  
CHECKED: [Signature]



▼ P1 TELEPHONE OUTLET (HIGH JACK)  
 ▼ TELEPHONE

NOTE - TELEPHONE COMPANY TO PROVIDE ONE INSTRUMENT FOR THOSE JACKS

TELEPHONE PANEL ROOM  
 200 P. HUNTER ST. 1120 200  
 P126 AS REG'D BY TELEPHONE  
 COMPANY

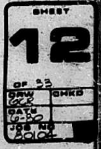
1) ALARM SYSTEM IS LOW VOLTAGE, RUN OVER TELEPHONE LINES FROM CENTRAL CONTROL AT POLICE STATION. WHEN CALL COMES OVER THE TELEPHONE AND RECEIVER IS LIFTED, A RELAY CONNECTED TO ALARM BUZZERS IS ACTIVATED AND BUZZER CONTINUES UNTIL TELEPHONE RECEIVER IS PUT DOWN ON SET. ALSO, WHEN CALL COMES IN AND RECEIVER IS LIFTED, A 90 SECOND TIME CLOCK IS ACTIVATED WHICH TURNS ON ALARM LIGHTS AND A RELAY IS USED TO RESET SYSTEM.

**communication**



**FRED J. BOZZO - AIA**  
 1500 E. MAIN STREET  
 TURLOCK CALIFORNIA 95380  
 999-830-9611

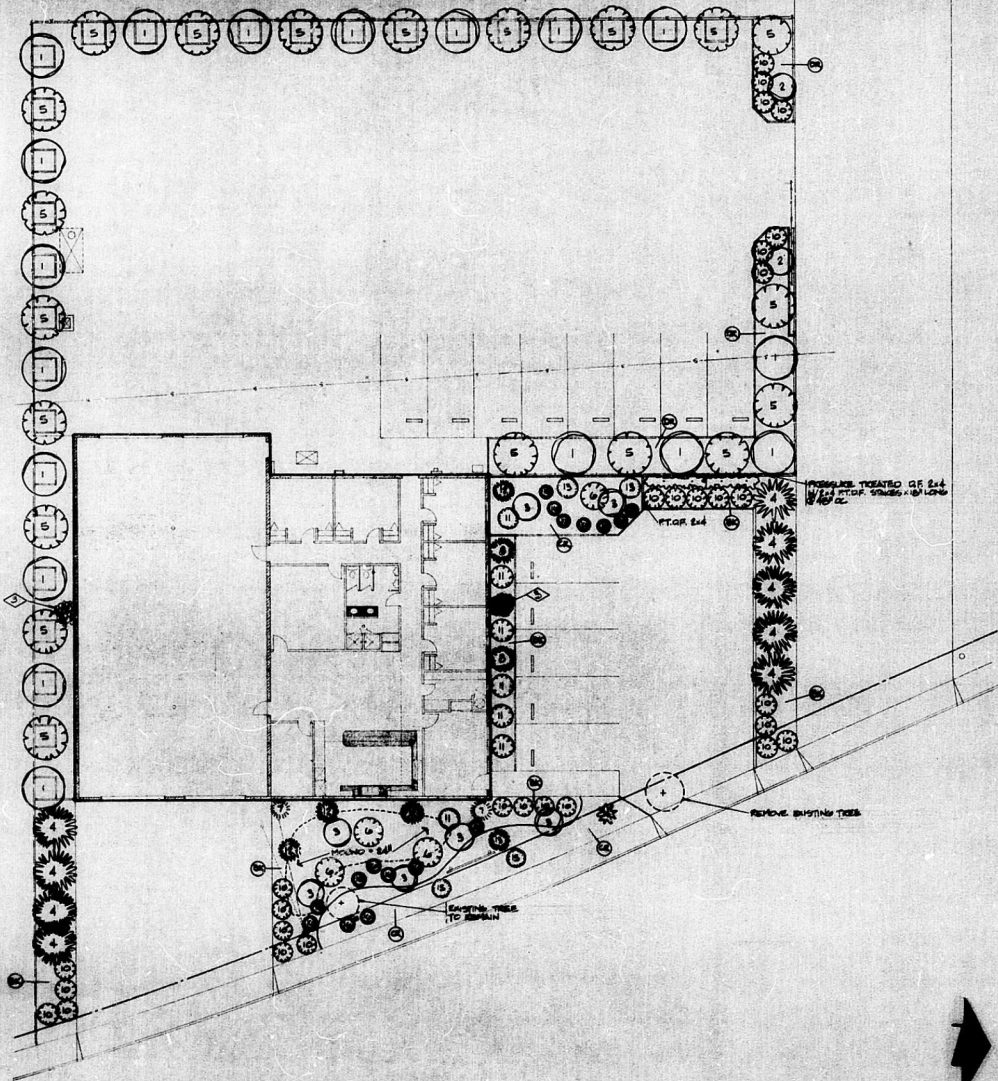
**FIRE STATION NO. 2**  
**CITY OF TURLOCK**  
 791 S. WALNUT ROAD  
 TURLOCK CALIFORNIA





PLANT LIST			
NO.	QUANTITY	SIZE	BOTANICAL & COMMON NAME
1	10	5 GAL.	CUPRESSOCYPERUS LUTLANDI - LUTLAND CYPERUS TREE
2	2	5 GAL.	FRAXINUS BLANCKANA - PURPLE LEAF BILUM TREE
3	7	5 GAL.	BETULA VERULFOSA ALBA - EUROPEAN WHITE BIRCH TREE
4	9	5 GAL.	JUNIPERUS CHAMPNERI TORULOSA - JUNIPER TORULOSA
5	20	5 GAL.	PISTIA FRANSER
6	4	5 GAL.	BACILLONIA FRONSA
7	2	5 GAL.	PODOCARPUS MACRO CARPA - YEW PINE
8	2	5 GAL.	CAMELLIA JAPONICA - JAPANESE CAMELLIA
9	4	5 GAL.	TROCHELOPSIDIUM JAMAICANENSIS - WAX JASMINE SPILLER
10	29	1 GAL.	RAVENSBRITZ INDICA 'SUNSHINE' - INDIA HANTHORN
11	7	1 GAL.	AZALEA SOUTHERN INDICA - SUN AZALEA
12	4	1 GAL.	PARROTULM TENAX RUBER - RED NEW ZEALAND FLAX
13	3	1 GAL.	MANISIA EXOTICA - MAHONUI BAMBPOO
14	1	5 GAL.	PAULS MUEBNO PLUMBAG - MUEBNO PINE
15	2	1 GAL.	PITTOCORUM TIBERIS VARIEGATUM - MAHONUI DWARF PITTOCORUM
16	10	1 GAL.	ADONISAMIS HYBRIDUM - LILY OF THE HILLS

(1) FERTILE SAND OVER 10 MIL. BLACK PLASTIC.  
 (2) COLORED ROCK (TO BLEND WITH BUILDING COLORS) ON 10 MIL. BLACK PLASTIC.  
 (3) DRAIN ROCK OVER 10 MIL. BLACK PLASTIC.



landscape



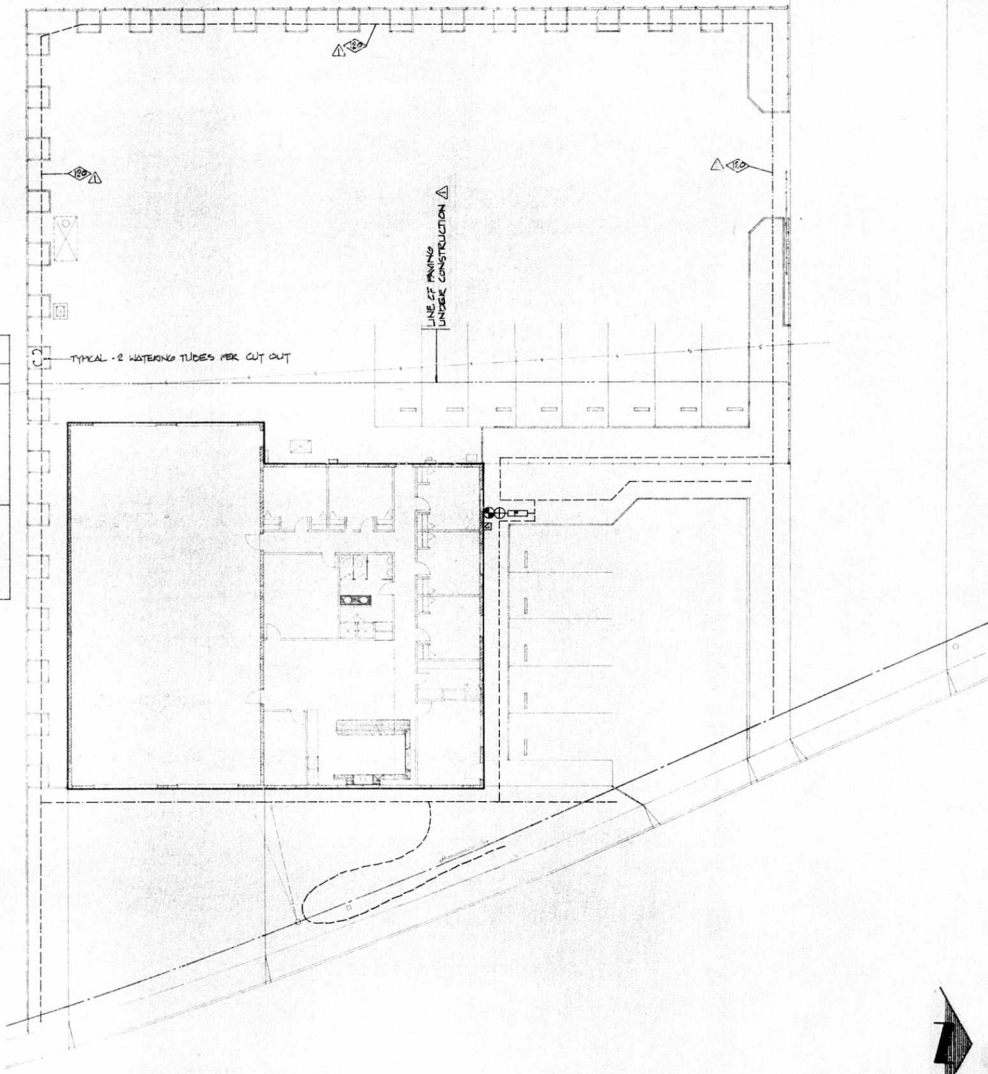
FRED J. BOZZO - AIA  
 LANDSCAPE ARCHITECT  
 101 EAST SERRANWAY AVE  
 SAN JOSE, CALIFORNIA 95128  
 408-251-0814

FIRE STATION NO. 2  
 CITY OF TURLOCK  
 791 S. WALNUT ROAD  
 TURLOCK  
 CALIFORNIA



MATERIAL LIST & SPECIFICATIONS				
SYMBOL	QUANTITY	MAKE	MODEL NO.	DESCRIPTION
	1	SUPERIOR	0003	3 STATION 24 V.A.C. AUTO CONTROLLER
	1	RANWICK	RVB-075	1/4" PRESSURE TYPE BRASS VACUUM BREAKER
	1	RANWICK	75-EPA	3/4" 24 V.A.C. ELECTRIC REMOTE CONTROL VALVE
	1	SMARCS	HF-80	3/4" FILTER W/80 MESH STAINLESS STEEL SCREEN
				1/4" SCHEDULE 40 PVC PIPE
				3/4" BLACK POLY PIPE - 125 LB. TEST
	260	QUINN	ER100-4B	.060 I.D. HEAVY WALL WATERING TUBE/WIEGHT.

\* BOTTOM OF VACUUM BREAKER SHALL BE A MINIMUM OF 12" ABOVE SOIL GRADE.  
 \* POLY PIPE SHALL BE INSTALLED ABOVE GROUND OUT BENEATH PLASTIC GROUNDCOVER.  
 \* WATERING TUBES SHALL BE INSTALLED AT THE FOLLOWING RATE: THREE (3) PER 5 GAL. TREE, TWO (2) PER 5 GAL. SHRUB, ONE (1) PER 1 GAL. SHRUB. (NOTE EXCEPTION ON PLAN)



FRED J. BOZZO - AIA  
 ARCHITECT  
 TURLOCK  
 881 EAST GREENWAY AVE  
 CALIFORNIA 95360  
 909-832-9915



FIRE STATION NO. 2  
 CITY OF TURLOCK  
 791 S. WALNUT ROAD  
 TURLOCK  
 CALIFORNIA

14  
 OF 32  
 DRW. CHKD.  
 DATE  
 JOB NO.  
 50103

**irrigation**

1"=10'

If you have any questions, please call me at (209) 668-6029 or email at [ccalvario@turlock.ca.us](mailto:ccalvario@turlock.ca.us).

Sincerely,

*Charlotte Calvario*

Charlotte Calvario  
Project Manager