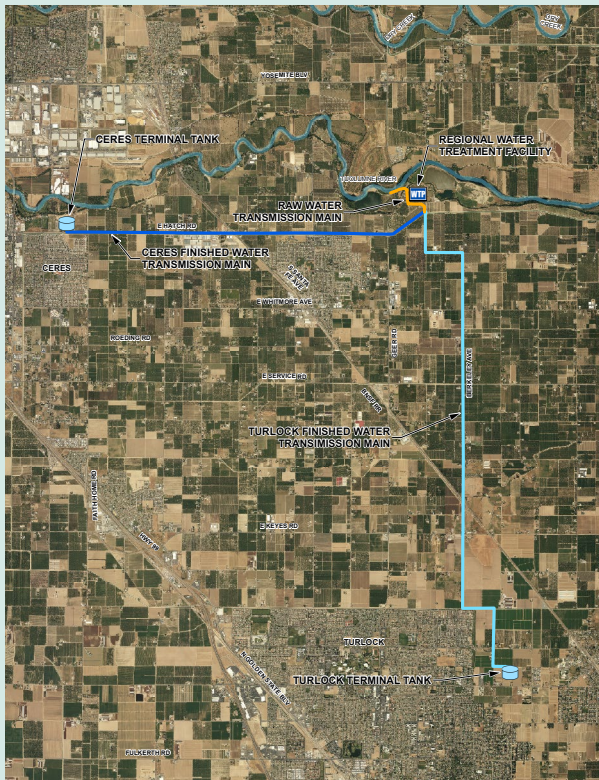


FACT SHEET

SUMMER 2017



PROJECT OVERVIEW



The Cities of Ceres and Turlock have formed the Stanislaus Regional Water Authority (SRWA) and, in partnership with the Turlock Irrigation District (TID), are working on a multi-benefit Regional Surface Water Supply Project (RSWSP) to develop a resilient and sustainable source of drinking water that will reduce groundwater dependence, improve drinking water quality, diversify regional drinking water supplies, and provide environmental benefits.

The RSWSP is a collaborative effort that will provide water from the Tuolumne River via an existing set of perforated pipelines installed in gravel about 8-feet below the bottom of the river bed, a new intake structure and pump station, treat the raw water to drinking water standards, and deliver it to the SRWA service areas for municipal and industrial uses. TID will also use the raw water facilities to deliver irrigation water to agricultural users.

WHAT ARE THE PROJECT BENEFITS?

The SRWA's Regional Surface Water Supply Project will deliver a long-term, sustainable water source that will allow for integrated use of groundwater and surface water and diversify the water supply portfolios for both Ceres and Turlock.

The benefits for residents, businesses, agriculture, and government agencies include:

- Diverse water supply portfolios
- Reliable integrated surface water and groundwater system
- Drought resilient water supplies
- Reliable water quality
- Groundwater aquifer replenishment (reduced urban groundwater pumping)
- Decrease in hardness and mineral content in both delivered drinking water and in wastewater effluent discharges
- Benefits to the agricultural community associated with reduced urban groundwater pumping, and the delivery of "offset" water to Turlock Irrigation District (from recycled or stored groundwater supplies) during dry periods
- Increased flows in the Upper Tuolumne River to benefit salmon and other aquatic species
- Potential to provide water to disadvantaged communities and other regional partners

WHY DO WE NEED THE PROJECT?

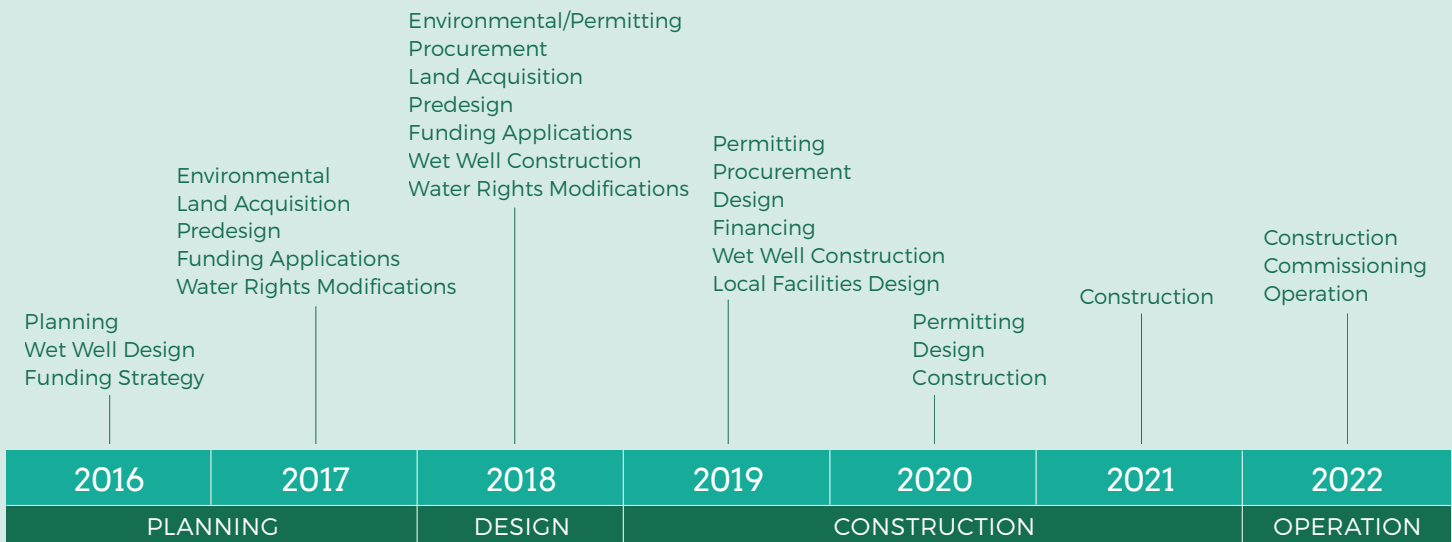
The Cities of Ceres and Turlock currently rely on groundwater as the sole source of drinking water. Some of this groundwater contains contaminants that require well-head treatment processes to remove these impurities prior to use, making it harder and more expensive to continue to treat and use groundwater. As these groundwater treatment standards become even more stringent, well-head treatment costs, and costs for new replacement municipal wells will continue to increase. The surface water supplied by this project will help by providing a supplemental supply to groundwater and provide a sustainable water supply. Furthermore, the need for this project has grown more urgent as the California Department of Water Resources (DWR) has identified the Turlock groundwater sub-basin as critically over-drafted under the Sustainable Groundwater Management Act (SGMA).



PROJECT FINANCING

The project cost is currently estimated at \$288 million dollars and will be funded by a combination of state and federal grants and low interest loans. The approximate Project Partner costs are estimated to be: City of Ceres \$100 million, City of Turlock \$182 million, and Turlock Irrigation District \$6 million.

PROJECT SCHEDULE



CONTACT US

Tish Foley
SRWA Board Secretary
Stanislaus Regional Water Authority

 (209) 668-5490

 TFoley@turlock.ca.us

LEARN MORE BY VISITING US AT

 www.stanrwa.com